

AGENDA

Meeting: Royal Wootton Bassett and Cricklade Area Board
Place: Royal Wootton Bassett Memorial Hall, Station Road, SN4 8EN
Date: Wednesday 21 March 2018
Time: 7:00pm, with networking and refreshments from 6.00pm

Including the Parishes of Braydon, Broad Town, Clyffe Pypard, Cricklade, Latton, Lydiard Millicent, Lydiard Tregoz, Lyneham & Bradenstoke, Marston Meysey, Purton, Tockenham and Royal Wootton Bassett.

The Area Board welcomes and invites contributions from members of the public. The chairman will try to ensure that everyone who wishes to speak will have the opportunity to do so.

If you have any requirements that would make your attendance at the meeting easier, please contact your Democratic Services Officer.

Please direct any enquiries on this Agenda to Kevin Fielding (Democratic Services Officer), direct line 01249 706612 or email kevin.fielding@wiltshire.gov.uk

All the papers connected with this meeting are available on the Council's website at www.wiltshire.gov.uk

Press enquiries to Communications on direct lines (01225) 713114 / 713115.

Wiltshire Councillors

Cllr Allison Bucknell - Lyneham
Cllr Mollie Groom - Royal Wootton Bassett East
Cllr Mary Champion - Royal Wootton Bassett North
Cllr Jacqui Lay - Purton
Cllr Chris Hurst - Royal Wootton Bassett South
Cllr Bob Jones MBE - Cricklade and Latton

RECORDING AND BROADCASTING NOTIFICATION

Wiltshire Council may record this meeting for live and/or subsequent broadcast on the Council's website at <http://www.wiltshire.public-i.tv>. At the start of the meeting, the Chairman will confirm if all or part of the meeting is being recorded. The images and sound recordings may also be used for training purposes within the Council.

By entering the meeting room you are consenting to being recorded and to the use of those images and recordings for broadcasting and/or training purposes.

The meeting may also be recorded by the press or members of the public.

Any person or organisation choosing to film, record or broadcast any meeting of the Council, its Cabinet or committees is responsible for any claims or other liability resulting from them so doing and by choosing to film, record or broadcast proceedings they accept that they are required to indemnify the Council, its members and officers in relation to any such claims or liabilities.

Details of the Council's Guidance on the Recording and Webcasting of Meetings is available on request.

	Items to be considered	Time
1	Networking Session	6:00pm
2	Chairman's Welcome and Introductions	7:00pm
3	Apologies for Absence	
4	<p>Minutes (<i>Pages 1 - 6</i>)</p> <p>To approve the minutes of the meeting held on Wednesday 10 January 2018</p>	
5	<p>Declarations of Interest</p> <p>To receive any declarations of disclosable interests or dispensations granted by the Standards Committee</p>	
6	<p>Wiltshire - The Wider Picture (<i>Pages 7 - 10</i>)</p> <p>News and information on what's going on in your local community and across the county:</p> <ul style="list-style-type: none"> • Work Wiltshire Website • Real Change Wiltshire 	
7	<p>Strengthening our Communities (<i>Pages 11 - 76</i>)</p> <p>Progressing our JSNA Housing Priorities.</p> <p>88.24% of people wanted to see more affordable housing. We will focus on how affordable housing is being delivered in our Community Area, to include a presentation from Greensquare Housing.</p> <p>Royal Wootton Bassett and Cricklade Road Surfacing Programme 2018/19</p> <p>To provide information on the progress made in improving the condition of the county's roads, and advise on the road surfacing schemes to be undertaken in 2018/19.</p>	

Grant Funding - new grant applications for March 2018

Allsorts Pre-School and Nursery - seeking £1,452.00 towards replacement of a perimeter fence.

Please view full application here:

Area Board Grant no 2621

http://services.wiltshire.gov.uk/areaboardgrants/grant_detail.php?gid=2621

St. Bartholomews Royal Wootton Bassett Church - seeking £4,500 towards a Croft kitchen refurbishment.

Please view full application here:

Area Board Grant no 2439

http://services.wiltshire.gov.uk/areaboardgrants/grant_detail.php?gid=2439

RWB TFC Vets - seeking £819.96 for four aluminium goals.

Please view full application here:

Area Board Grant no 2642

http://services.wiltshire.gov.uk/areaboardgrants/grant_detail.php?gid=2642

CMAS - proposal for providing youth work for 6 months starting April 2018

That the Area Board agrees in principle to continue Youth Provision for Royal Wootton Bassett, Cricklade and Lyneham as outlined in the attached proposal for a period of 6 months starting from April 1st 2018, subjecting to Youth Funding being in place.

8 **Spotlight on Parishes and Partners** (*Pages 77 - 90*)

To receive updates from our key partners, including:

- Wiltshire Police
- Dorset and Wiltshire Fire & Rescue Service
- Greensquare
- CMAS
- NHS Wiltshire
- Healthwatch Wiltshire
- Recycle for Wiltshire
- Parish and Town Councils

- CEM update (written as newsletter)

9 **Task Group Reports and Decisions** (*Pages 91 - 102*)

To consider reports from the following task groups and make any necessary decisions:

- Community Area Transport Group
- Wiltshire Wildlife Trust

10 **Wrap Up**

8:30pm

MINUTES

Meeting: ROYAL WOOTTON BASSETT AND CRICKLADE AREA BOARD
Place: Royal Wootton Bassett Rugby Club, Malmesbury Road, Royal
Wootton Bassett
Date: 10 January 2018
Start Time: 7.00 pm
Finish Time: 8.30 pm

Please direct any enquiries on these minutes to:

Kevin Fielding, direct line 01249 706612 or e-mail kevin.fielding@wiltshire.gov.uk

Papers available on the Wiltshire Council website at www.wiltshire.gov.uk

In Attendance:

Wiltshire Councillors

Cllr Allison Bucknell, Cllr Jacqui Lay, Cllr Chris Hurst and Cllr Bob Jones MBE

Wiltshire Council Officers

Alexa Davies – Community Engagement Manager

Kevin Fielding – Democratic Services Officer

Jan Bardwell – Health Trainer

Karen Spence – Public Health

Town and Parish Clerks/Councillors

Broad Town Parish Council – Sandra Hartley & Simon Billis

Cricklade Town Council – Mark Clarke, Diana Fairbrass, Sue Holbrook, Tony Clements & Nick Dye

Lyneham & Bradenstoke Parish Council – Judy Digman & Geoff Jackson-Haines

Lydiard Millicent Parish Council – Deborah Bourne

Purton Parish Council – Ray Thomas

Royal Wootton Bassett Town Council – Stephen Walls & Johnathon Bourne

Tockenham Parish Council – Geoff Cowling

Partners

Dorset & Wiltshire Fire and Rescue Service – Matty Maggs & Glyn Moody

Wiltshire Wildlife Trust – Gemma Annan

MOD Lyneham – Amy Dallimore

RWB Arts Festival – John Davies

Total in attendance: 40

<u>Agenda Item No.</u>	<u>Summary of Issues Discussed and Decision</u>
38	<u>Networking Session</u>
39	<p><u>Chairman's Welcome and Introductions</u></p> <p>The Chairman welcomed everyone to the meeting of the Royal Wootton Bassett & Cricklade Area Board and to the Royal Wootton Bassett Rugby Club</p> <p>The councillors and officers present were introduced.</p> <p>The Chairman thanked Alzheimer's Society Side-by-Side Programme, Glynwen Chetcuti - Learndirect and Wiltshire Council health trainer Jan Bardwell for the networking displays prior to the meeting.</p>
40	<p><u>Apologies for Absence</u></p> <p>Apologies for absence were received from Mary Champion – Wiltshire Council, Mollie Groom – Wiltshire Council, Mike Sharp – Lydiard Millicent Parish Council, Sheila Dunn – RWB Memorial Hall and John Coole – Cricklade Town Council.</p>
41	<p><u>Minutes</u></p> <p>Decision</p> <ul style="list-style-type: none"> • The minutes of the meeting held on Wednesday 8 November 2017 were agreed a correct record and signed by the Chairman.
42	<p><u>Declarations of Interest</u></p> <p>There were no declarations of interest.</p>
43	<p><u>Wiltshire - The Wider Picture</u></p> <p>The following Chairman's Announcements were noted:</p> <ul style="list-style-type: none"> • Office of the Police and Crime Commissioner- Precept Consultation

Strengthening our Communities

Karen Spence - Public Health Specialist, Wiltshire Council presented an interactive Mental Health Awareness Workshop.

Points made included:

- We all have mental health as well as physical health. They are linked together and we need to look after both.
- Mental health is about how we: think and feel about ourselves and others and how we interpret events.
- Our mental health influences how we cope, our relationships with others and our self-esteem.
- About a quarter of the population will experience some kind of mental health problem in the course of a year, with mixed anxiety and depression the most common mental disorder in Britain.
- Everyone feels down and stressed sometimes, it's a normal part of life.
- Stressful thoughts and feelings and events come and go.
- We all need ways of looking after ourselves and getting support.
- For some of us, we may feel down or anxious for longer and it starts to affect our day-to-day life.
- Then we may need extra things to help.

The Chairman thanked Karen Spence for a very informative presentation.

Grant Funding

The Area Board members are asked to consider three applications for grant funding and one Councillor-led initiative:

Decision

Cricklade leisure centre awarded £945 towards a defibrillator to be sited outside the leisure centre.

Decision

Noremarsch Junior School awarded £5,000 towards completion of an all weather running track to enhance provision for all pupils and to extend the facilities available to the community

	<p>Decision Purton Parish Council awarded £770 towards footpath improvement under the Paths Improvement Grant Scheme FP84</p> <p>Decision White Horse Trail councillor initiative awarded £250 for improvement to the White Horse interpretation board at Broad Town</p>
45	<p><u>Spotlight on Parishes and Partners</u></p> <p>Updates were received from the following Partners, Towns and Parishes:</p> <p>Community Mentoring and Support – the written report was noted.</p> <p>Points made included:</p> <ul style="list-style-type: none"> • That lots of good youth work was being carried out over the RWB&C community areas. • That CMAS were moving into the Hive at MOD Lyneham. • That good street based youth work in Cricklade had now developed and moved into a venue for regular evening meetings. <p>Recycling for Wiltshire Joint Venture – Gemma Annan was in attendance and the written report was noted.</p> <p>Points made included:</p> <ul style="list-style-type: none"> • That Wiltshire Wildlife Trust were still looking for a couple more schools to sign up for the Recycle for Wiltshire Joint Venture project. • That places were available for a visit to the Compton Bassett Recycling Centre on Thursday 8 February 2018. <p>Wiltshire Police - the written report was noted.</p> <p>Dorset and Wiltshire Fire & Rescue Service - the written report was noted.</p> <p>Royal Wootton Bassett Town Council – the written report was noted.</p> <ul style="list-style-type: none"> • A petition was presented to the Chairman from Cllr Chris Hurst on behalf of Wood Street and Borough Fields residents, Royal Wootton Bassett.

	<p>The petition highlighted residents requests for Wiltshire Council to consider extending the off-street residents scheme.</p> <p>Cricklade Town Council – the written report was noted.</p> <p>The Chairman thanked all partners for their updates.</p>
46	<p><u>Task Group Reports and Decisions</u></p> <ul style="list-style-type: none"> • The Community Area Transport Group (CAT-G) report dated Wednesday 6 December 2017 were noted. • The Community Area Transport Group (CAT-G) – next Meeting on Wednesday 7 March 2018.
47	<p><u>Wrap Up</u></p> <p>Next meeting: Wednesday 21 March 2018, Royal Wootton Bassett Memorial Hall.</p>

Chairman's Announcements

Subject:	The new one-stop shop Work Wiltshire website
Contact Details:	https://workwiltshire.co.uk/

Key message:

On the 4th July, the new Work Wiltshire website launched. This is a unique website containing a huge range of education, employment and skills information which would normally have been located on several different sites and can now be found in one location with signposting to other relevant sites.

This website has been made to be accessible, attractive and a professional information hub. By having a one-stop-shop website, it will enable us to become the go-to place for career information, advice and signposting to relevant sites that the customers are looking for.

Work Wiltshire website contains information and links for: next steps in education, apprenticeships, information for employers, support available for those with barriers to work, information for those looking for work or wanting to upskill, financial support, further and higher education, local projects, support for schools and policies and data.

Questions:

How we set it up?

The Work Wiltshire website was originally created to support employers, employees and those looking for work. It then expanded to cover the programmes that the Employment and Skills Service were running, as well as providing career information, labour market intelligence, Wiltshire statistics, news and events and the services strategy.

The Employment and Skills service decided expand the website further and extend the range of audiences it catered for and allow them to access all the information they may need in one location. The redevelopment of the website was funded by Action 4 Wiltshire and has engaged with key stakeholders throughout the development to make sure that the website will work as effectively as possible and include tailored information to the different users.

Who were involved?

The main development of the website was conducted by the Employment and Skills Service at Wiltshire Council with stakeholders from Children's Services, Employment and Community Skills, local schools, Carer Support Wiltshire, Community First as well as others, contributing content and feedback to ensure the website is relevant, engaging and accessible.

Chairman's Announcements

What we are hoping to achieve?

A helpful and creditable website which enables local people and employers to find the key information and links they would like to know in one location.

Is this a model used elsewhere?

Other websites focus on specific sections which are included on the Work Wiltshire, but to our knowledge the combination of having all education, employment and skills information for young people, the general public, those with barriers to work and employers, all in one location is unique.

What has been the website take-up so far?

Since its launch we have had over 3,540 people use our website looking at 13,175 pages, with a wide variety of age demographics. The most popular pages so far being apprenticeships information for employers, apprenticeships, support for schools, and young people's next steps.

What can it do for people?

People will be able to search through the different sections on the website to find out education, employment and skills information. There is also a news section and events page, which shows the Employment and Skills service blog, local vacancies, Higher Education open days and much more.

It will help employers with find information and support for their business including how to set up an apprenticeship, free HR support, how business can get involved in local programmes, grants and other information.

It also has a dedicated section to help schools with careers education, giving information of local support, provision, the Wiltshire Careers Education Programme and support helping them arrange careers events.

It also has a section for those with complex needs and barriers to work; which highlights what support there is for them.

REAL CHANGE WILTSHIRE

The best chance for a homeless person to get off the streets is with professional help from a charity or support organisation.

Making sure help reaches homeless people is far more effective than giving money to people on the street.

If you do want to donate, your small change can make a real change in Wiltshire – and a big difference to charities supporting the homeless.

Find out how you can help – www.wiltshire.gov.uk/realchangewiltshire

To notify the right people about a rough sleeper – www.streetlink.co.uk

#realchangewilts

Wiltshire Council

Royal Wootton Bassett and Cricklade Area Board

21 March 2018

Subject: Royal Wootton Bassett and Cricklade Road Surfacing Programme 2018/19

Cabinet Member: Councillor Bridget Wayman - Highways, Transport and Waste

Key Decision: No

Executive Summary

The local highway network is vital for businesses and communities, and effective maintenance to ensure its availability is essential to the economic development of the county. Wiltshire Council recognises the importance of maintaining and managing its highway network effectively.

There has been under investment in highways maintenance nationally for many years. The significant investment of £21 million annually in recent years by Wiltshire Council has seen a large number of roads treated, with a substantial improvement in the overall condition of the county's road network.

The overall condition of Wiltshire's roads compares favourably with the national average and the south-west average road conditions.

The Council's approved capital budget for road surfacing and related work in 2018/19 is £16,139,000. It is proposed to carry out resurfacing and other treatments at over 100 sites this year, which vary in both size and type. There are also a large number of skid resistance sites to be treated this year, which are required in order to keep the roads safe. They consist of various treatments, including surface retexturing and resurfacing. The proposed expenditure in each area is broadly proportional to the lengths of road within the individual Area Boards.

A number of schemes have been identified which has not been possible to include this year, but which could be considered for implementation in future years. These have been listed for information, but at present it is not possible to state with certainty when it will be possible to treat them.

A budget of £2,500,000 has been included for carrying out smaller repairs at localised areas where safety defects are identified, or where road conditions are causing safety concerns.

With an extensive road network and aging infrastructure there is a need to plan for long term asset renewal. Good progress has been made on reducing the road maintenance backlog in recent years, but other highway assets, including street lighting, safety fences, road signs, footways and traffic signals will need investment to keep them safe

in the future and to avoid expensive unplanned emergency repairs. The Council's new Highways Infrastructure Asset Management System (HIAMS) will be used to develop a forward programme of resurfacing work for the next five years, to ensure value for money and use whole life costing for the highways asset.

Proposals

It is recommended that the Area Board:

- (i) Acknowledges that there has been a substantial improvement in the overall condition of Wiltshire's roads in recent years, but further investment is still required.
- (ii) Approves the highway maintenance scheme list for this community area in 2018/19 prepared for the Area Board.
- (iii) Notes that a new five year programme will be developed shortly, making use of the Council's new Highways Infrastructure Asset Management System (HIAMS), to ensure best value for money and whole life costing for the highways asset.

Reason for Proposals

The highway network forms the Council's largest asset, and it is important that it is maintained in the most cost-effective way that demonstrates value for money. This includes the use of asset management and whole life costing approaches to inform investment decisions.

Asset management principles have been applied for many years in Wiltshire to ensure that there is appropriate investment with longer term planning for the management of the highways assets.

Alistair Cunningham
Corporate Director

Wiltshire Council

Royal Wootton Bassett and Cricklade Area Board

21 March 2018

**Subject: Royal Wootton Bassett and Cricklade Road Surfacing Programme
2018/19**

Cabinet Member: Councillor Bridget Wayman - Highways, Transport and Waste

Key Decision: No

Purpose of Report

1. To provide information on the progress made in improving the condition of the county's roads, and advise on the road surfacing schemes to be undertaken in 2018/19.

Relevance to the Council's Business Plan

2. The Wiltshire Council Business Plan 2017 – 2027 sets out the vision to create strong communities, with priorities for growing the economy, strong communities and protecting the vulnerable. As part of growing the economy it is acknowledged that it is necessary to bring the county's roads up to an acceptable state. The goal is that road infrastructure is improved and to:
 - Improve asset management and the use of investment to improve the condition of Wiltshire roads (implementing our Highways Asset Management Strategy).
 - Promote and further development the MyWiltshire app to improve and increase the reporting of issues.

Background

3. The local highway network in Wiltshire comprises over 4,400 kilometres of road and is vital for businesses and communities. Effective maintenance to ensure its availability is essential to the economic development of the county. Wiltshire Council recognises the importance of maintaining and managing its highway network effectively, and has been making a significant investment in improving the condition of its highway assets in recent years.
4. The condition of the county's roads is important to the public. This is demonstrated by the results of previous People's Voice surveys and the annual National Highways and Transportation (NHT) surveys, which indicate low levels of public satisfaction with road conditions nationally and in Wiltshire.

5. This report provides a summary of the progress to date on improving the condition of the county's roads, and the proposed road surfacing on the Council's current highway investment programme.

Main Considerations for the Council

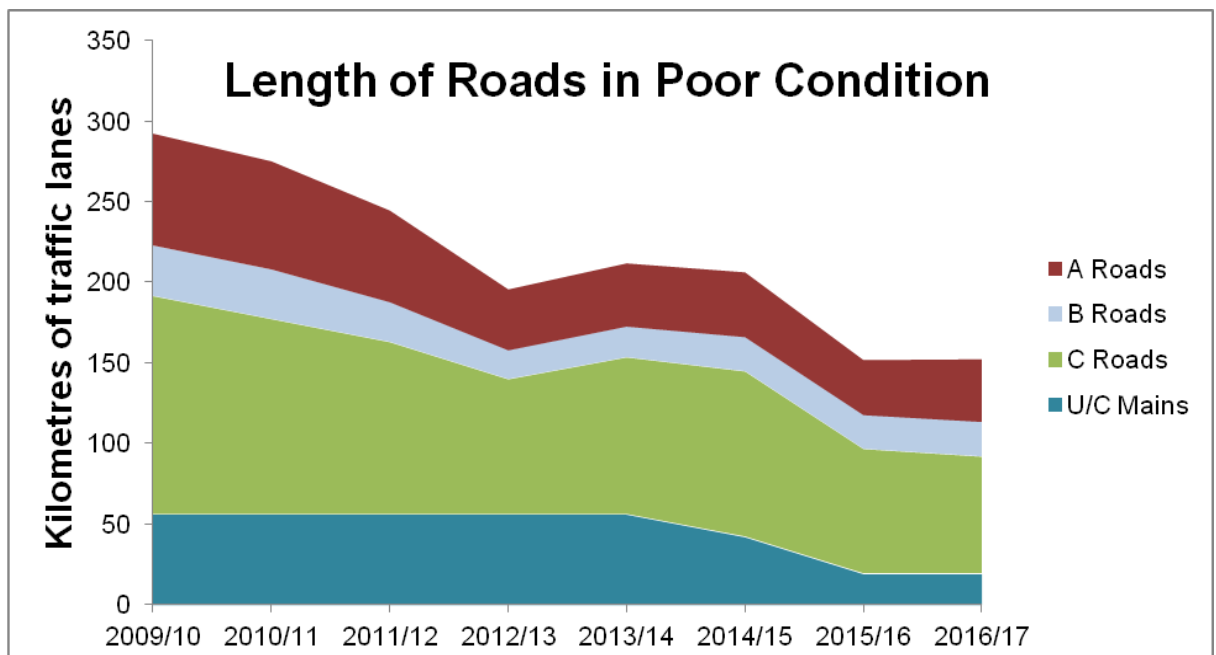
Local Highways Investment Fund 2014 – 2020

6. The 'Local Highways Investment Fund 2014 – 2020' was intended to address the longstanding under investment in highways maintenance and the consequent backlog, which has been a problem nationally for many years. The Council's major programme of investment in highway maintenance was originally proposed to be over six years to deliver a significant improvement in the condition of the county's highway network.
7. The programme has just completed its fourth year, and there has been a substantial amount of work completed, with an overall improvement in the county's road conditions. The investment was initially targeted at those roads in worst condition, especially the main roads, and the approach was expanded last year to include more preventative maintenance on the minor roads and renewal of footways.
8. Nearly all of the schemes in the 2017/18 programme have been completed. There have been a few minor roads which formed part of the surface dressing programme which have not been completed because of the need for particular equipment. These are being programmed for early next year. The programme of footway renewal and reactive carriageway repairs is currently being completed.
9. At the start of the investment programme it was intended that the investment should be used to improve approximately 664 kilometres of the network (about 15% of the total road length). As some of the roads will continue to deteriorate during this period a greater proportion of the network has to be treated to achieve the overall improvement target at the end of the period.
10. In the first year of the investment there were a number of sites which needed major reconstruction work and the lengths of road treated were less than originally envisaged. A substantial programme of surface dressing of mainly rural roads has been undertaken in recent years, and the total lengths of road resurfaced have increased considerably.

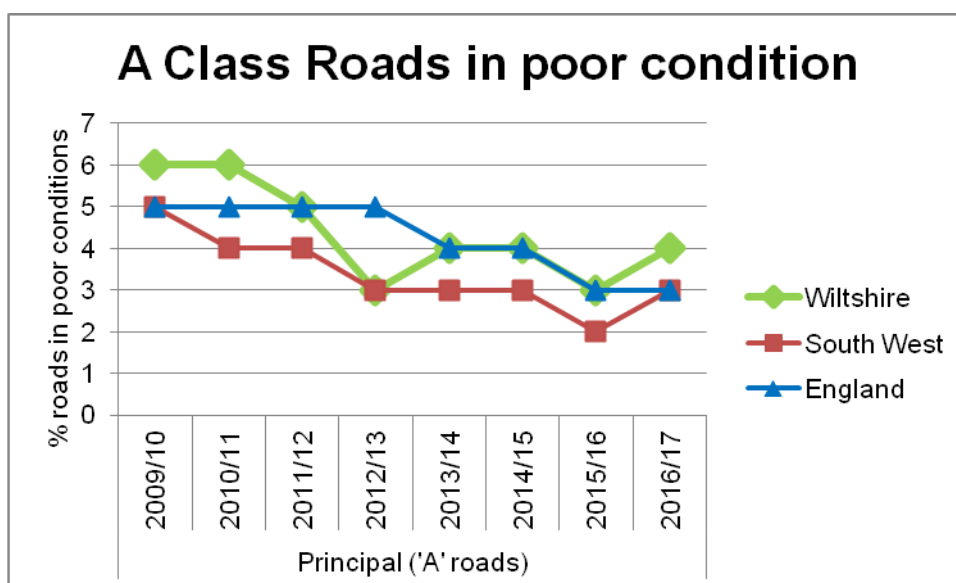
Year	Length treated (kilometres)
2014/15	148
2015/16	182
2016/17	250
2017/18	181
Total	761

11. A total of 761 kilometres of road have been resurfaced since 2014, which is about 17% of the network. There have also been a significant number of smaller sites treated with hand patching and repairs to address localised areas in poor condition.

12. The detailed calculation of the backlog carried out by the Council's specialist consultants, WDM, indicates that there has been a significant reduction of 30% in the backlog since the start of the programme with the backlog reducing from an estimated £69.4 million to £48.2 million.
13. There has been a significant reduction in the length of road in Wiltshire in poor condition, which has almost halved since 2009. This has been largely due to the additional funding provided by the Council, especially in recent years through the Local Highways Investment Fund.

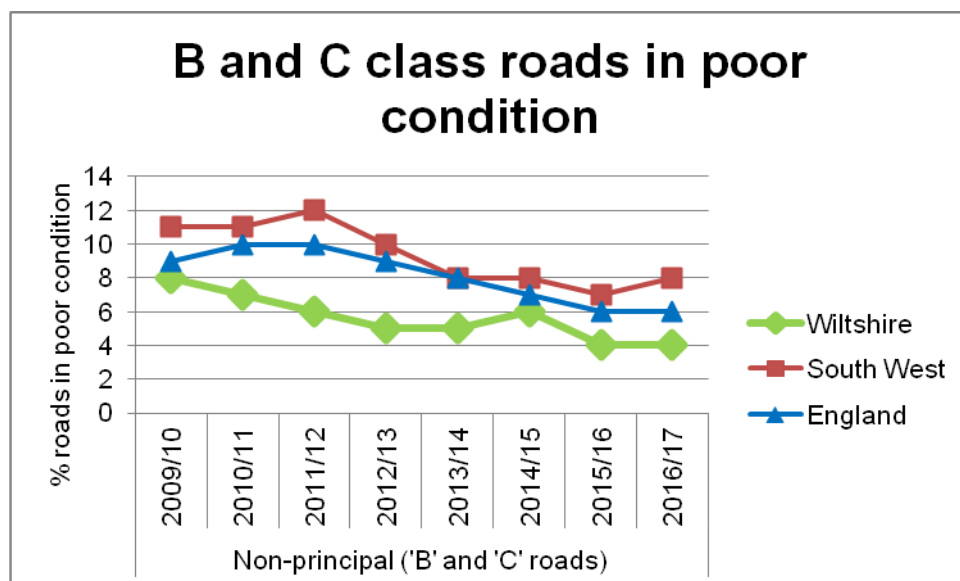


14. The condition of A roads has improved nationally since 2009 from 5% in poor condition to 3% in 2016/17 (Note - Low percentages are good). In Wiltshire the A class roads in poor condition have reduced by the same amount, but this year they have risen slightly above the national and south-west average at 4%.

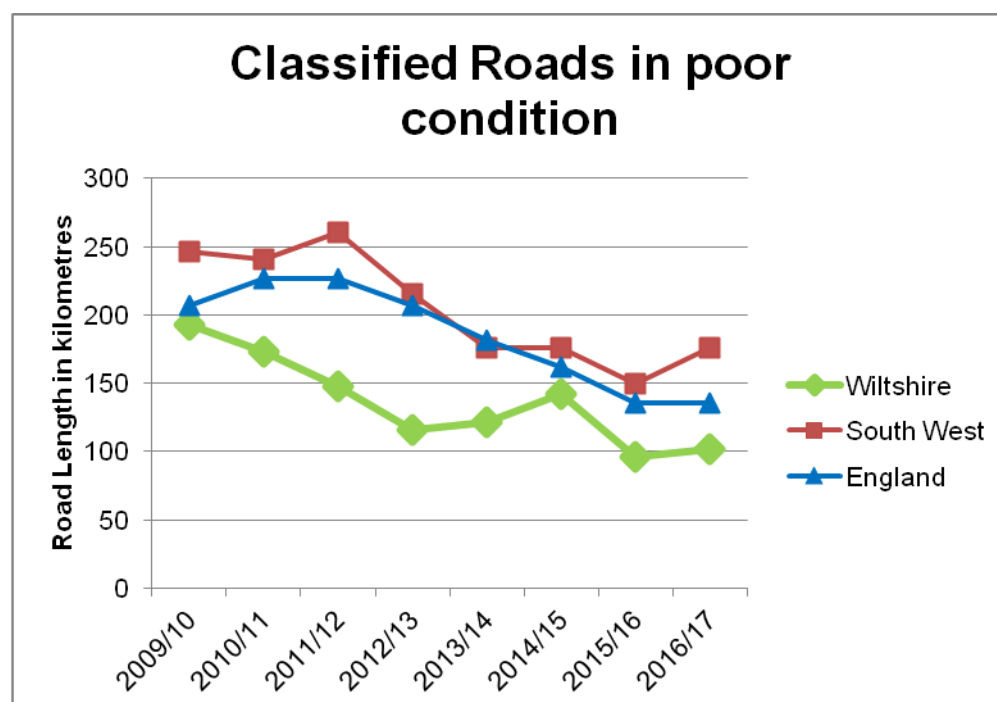


15. The B and C class roads represent 45% of the road network by length in Wiltshire. This is a large proportion of the network. Keeping these roads in good

condition is important to the local communities, and requires substantial investment.



16. The B and C class road conditions in Wiltshire are much better than the national and south-west averages, with 4% in poor condition, which is half the south west average of 8%, and better than the national average of 6% for these types of roads.
17. If the condition of classified roads (A, B and C class roads) in Wiltshire had followed the national or south-west averages, the roads would be in appreciably worse condition than they are now. The graph below shows the actual lengths of road in poor condition in Wiltshire by year, and what the lengths would have been if Wiltshire's roads were in the same condition as the national or south-west average condition (i.e. there would be more in poor condition).



18. The condition of the unclassified roads is more difficult to compare as the assessment methods are not necessarily consistent across authorities. In general terms the condition of the more important unclassified roads in Wiltshire

compares well with those of similar authorities in the south west, but further assessment would be required to get a better understanding of minor road conditions across the south west.

19. Since 2009 the roads in Wiltshire, particularly the classified roads, have been improved more than those in the south-west, and they are in better condition than the national average.
20. The changing road conditions in each of the Area Boards between 2009 and 2017 are shown in **Appendix 1**. This is based on the road lane length considered to be in poor condition using the road condition survey data. The graphs show that overall there has been an improvement in all of the areas during that time.

Surfacing Schemes for 2018/19

21. The Council's approved capital budget for road surfacing in 2018/19 is £16,139,000, which is less than the £21,000,000 it has been in recent years. As a result it will not be possible to treat as many sites as had been originally envisaged. However, it is still proposed to carry out resurfacing and other treatments at over 100 sites this year (see **Appendices 2 and 3**).
22. The identified sites vary in both size and type. The proposed expenditure in each area is broadly proportional to the lengths of road within the individual Area Boards. A number of schemes have been identified which it has not been possible to include this year, but which could be considered for treatment in future years. These have been listed for information, but at present it is not possible to state when it will be possible to treat these sites.
23. There are also a large number of skid resistance sites to be treated this year, which are required in order to keep the roads safe. They consist of various treatments including surface retexturing and resurfacing.
24. A budget of £2,500,000 has been included for carrying out smaller repairs at localised areas. These repairs will be carried out where safety defects are identified, or where road conditions are causing safety concerns.
25. The Council carries out a large programme of highway drainage improvements funded from the highways maintenance budget to keep the roads safe and to protect the highway asset. Funding is also required to replace life-expired street lights, traffic signals, road signs and other highway infrastructure. A separate budget of £3,000,000 is provided for renewal, replacement and maintenance of the county's bridges and structures to keep them safe.
26. A substantial budget of £1,250,000 was included in 2017/18 for footway resurfacing and renewal, and a further £150,000 was made available for the Area Boards to prioritise footway improvements or maintenance. In view of the reduced budget for 2018/19 it has not been possible to include similar schemes in this year's programme, and generally footway works will need to be restricted to treating safety defects this year.

Future Proposals

27. The funding levels for road resurfacing and related work in Wiltshire have been proportionally higher than for most authorities in recent years because of the additional funding provided by this Council. The reduced budget in 2018/19 is

- likely to be a challenge as work is going to have to be increasingly focused on keeping the network safe, and there will be less scope for dealing with less urgent sites. Road safety on the network will continue to be the priority.
28. Progress on the six year programme identified in 2013 has been reported annually to the Area Boards, and the programme has been substantially completed. However, there are still a number of sites which were included in the original programme, or have subsequently been suggested for treatment, which have yet to be completed.
 29. The Council's new Highways Infrastructure Asset Management System (HIAMS) will be used to help derive a future works programme to ensure best value for money and whole life costing for the highways asset. It is proposed that a new five year programme will be developed shortly, making use of the existing road condition data and predicted deterioration rates. The new system provides the opportunity to carry out more detailed calculations regarding road conditions and deterioration to inform investment decisions.
 30. With an extensive road network and aging infrastructure there is a need to plan for long term asset renewal. Good progress has been made on reducing the road maintenance backlog in recent years, but further work is still required and other assets, including street lighting, safety fences, road signs, traffic signals and bridges, will need continued investment to keep them safe and to avoid unplanned emergency repairs in the future.

Safeguarding Implications

31. None.

Public Health Implications

32. The condition of roads and related infrastructure can have serious safety implications, especially with regard to skid resistance. Keeping roads in good condition can help with reducing accidents. Roads, bridges, highway structures, signs and street lighting need to be kept in good condition in order to protect the public and those maintaining the assets.

Corporate Procurement Implications

33. There are no procurement implications at this stage.

Equalities Impact of the Proposal

34. The improved maintenance of the highway network, its management using sound asset management principles, and good performance by the highways contractors, should benefit all road users, including public transport, and vulnerable road users such as cyclists and pedestrians.

Environmental and Climate Change Considerations

35. The effects of climate change could be significant for the highway network. There was considerable damage to the roads, footways and drainage systems in the flooding of 2014, and such events could be repeated. Having robust

maintenance and investment strategies to improve the condition of the network helps build resilience into the highway network and the infrastructure.

36. Where possible, suitable materials arising from road resurfacing schemes are recycled. Large quantities of road planings are used on rights of way to repair damage and on county farms, or provided to community groups. The presence of tar bound materials in older carriageways has caused problems on some sites as it has to be disposed of as contaminated waste, with consequent cost implications. Options for in-situ and other recycling processes are being progressed where viable in order to increase the recycling of highway materials.
37. The use of 'warm' asphalt for surfacing on the network in Wiltshire has increased significantly in recent years. The material has proved durable and the process produces less carbon than traditional methods.

Risk Assessment

38. The application of good asset management principles, the planned maintenance of the highway infrastructure, and the establishment of formalised asset management policies help reduce the risk of incidents and claims.

Risks that may arise if the proposed decision and related work is not taken

39. There is a risk of increased collisions, claims and public dissatisfaction if highway maintenance is not carried out. The principles of asset management have been followed by this Council for many years, and there is a need to continue to demonstrate best practise and obtain best value for money. Future DfT funding will be dependent on demonstrating the application of good asset management principles. Failure to do so will result in reduced funding in future years.

Risks that may arise if the proposed decision is taken and actions that will be taken to manage these risks

40. It is important to ensure that highways asset management and service delivery are implemented effectively. Processes are currently in place with Service Delivery Teams managing the various aspects of the highway service, and these are the appropriate groups to continue to manage the associated risks. The teams include representatives from the Council, consultants and contractors involved in carrying out the works, and they report to the Contract Management Meeting comprising senior managers from those organisations.

Financial Implications

41. The highway network and related infrastructure forms the Council's largest asset, and has a replacement value of over £5 billion. It is important that it is maintained in the most cost-effective way in order to obtain value for money. This includes the use of a whole life costing approach to inform investment decisions on highway maintenance.
42. The capital budget for 2018/19 will be £16,139,000, which is less than the £21,000,000 available in recent years. The current surfacing programme has been developed on the basis of the approved budget.

43. The increasing drive for asset management from DfT will mean that failure to demonstrate the application of this approach will result in reduced funding from central government through the incentive fund. It is therefore important to meet the requirements of the incentive funding self assessment, and measures are in place to ensure this.

Legal Implications

44. The Council has a duty under the Highways Act to maintain the county's roads. The highway inspection procedures, policies and improvement plans ensure that this duty is fulfilled. The investment and improved road conditions in recent years is helping the Council meet its responsibilities with regard to road maintenance.

Options Considered

45. The recent investment in highways maintenance has seen a substantial improvement in the condition of the county's roads, which are in better condition than the south west and national averages.
46. The proposed scheme list for 2018/19 has been developed based on the condition data and local knowledge and is considered to represent a realistic programme in view of current funding levels.
47. There is a need to continue to apply asset management principles to the highway network and to ensure the performance of the contractors involved in delivering the service is good in order to keep the network in good condition and to ensure value for money.

Conclusions

48. The highway network forms the Council's largest asset, and it is important that it is maintained in the most cost-effective way in order to show value for money. This includes the use of whole life costing approaches to inform investment decisions.
49. The 'Local Highways Investment Fund 2014 – 2020' has provided the opportunity to address the longstanding under investment in highways maintenance, which has been a problem nationally for many years. The significant investment of £21 million in previous years by Wiltshire Council has seen a substantial improvement in the condition of the highways network.
50. A programme of road resurfacing for 2018/19 has been identified, based on safety needs and the need to improve the condition of the highway network and related assets.

Parvis Khansari
Director Highways and Transport

Report Author:
Peter Binley

The following unpublished documents have been relied on in the preparation of this report:

None

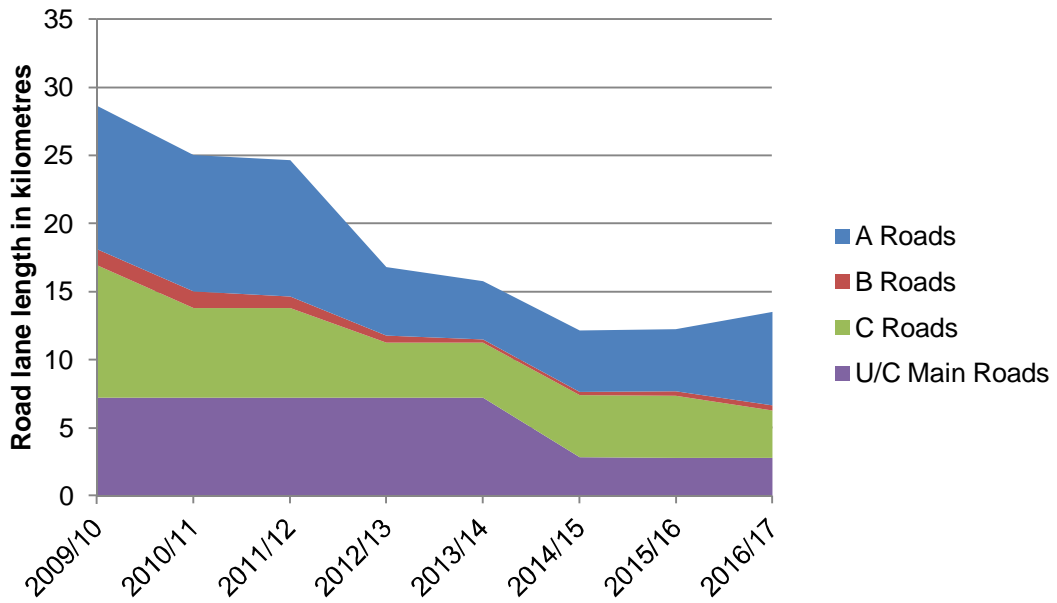
Appendices

Appendix 1 – Road Conditions by Area Board 2009 to 2017

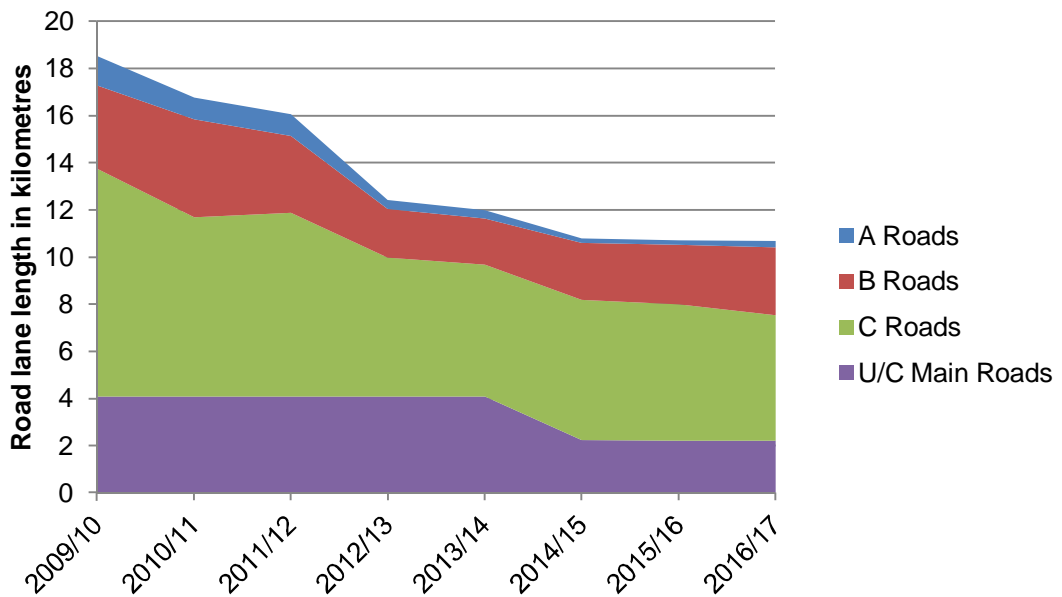
Appendix 2 – Surfacing Scheme List 2018/19

Appendix 3 – Map of Surfacing Sites 2018/19

Pewsey Area Board Roads in poor condition



Royal Wootton Bassett and Cricklade Roads in poor condition



Wiltshire Highways Surfacing Proposals 2018/19



February 2018

Amesbury			
Road	2018/19 Schemes	Treatment	
A345	A345 Figheldean to Durrington	Surface Treatment	£205,410.14
B3086	B3086 London Road, Shrewton	Surface Treatment	£53,207.96
A345	A345 Workhouse Hill, Amesbury (Salisbury Road)	Surfacing	£168,852.06
A338	A338 Cholderton (Carriageway Repairs)	Carriageway Repairs	£60,000.00
A338	A338 Idmiston to Porton	Surfacing	£169,136.85
	Total Schemes		£656,607.01
Road	Skid Resistance Improvements	Treatment	
A360	From A360 Tank Crossing 'F' to Tilshead (975817 & 979210)	Retexture	£2,697.60
A360	A360 North of New Cut Cross Roads (979180)	Retexture	£3,343.90
A360	A360 The Avenue to Church Bottom (979182)	Retexture	£5,704.30
A360	A360 North of Stoford Xrds at Camp Cottages (979184 & 975792)	Retexture	£43,043.58
UC	UC The Packway to Netheravon Rd Roundabout (976791)	Retexture	£8,092.80
B3086	B3086 Shrewton Road at Bustard Crossroads (976763)	Retexture	£961.02
	Total Skid Resistance		£63,843.20
Road	Reserve or future years sites – to be reviewed	Treatment	
A360	A360 Tilshead	Surfacing	£200,000.00
A345	Countess Road South from A303 to Earls Court Rd Mini, Amesbury	Surfacing	£217,027.72
UC	Berwick Lane, Steeple Langford	Surfacing	£19,630.00
UC	Fisbury Rd & Kingsbourne Close, Winterbourne Dauntsey	Surfacing	£65,028.60
A345	A345 Beehive Rbt to Winterbourne Gunner junc.	Surfacing	£119,488.64
A3028	A3028 Bulford Double Hedges	Surfacing	£119,683.00
B3086	High Street, Shrewton	Surfacing	£169,734.08
A360	A360 Maddington St/Amesbury Rd, Shrewton	Surfacing	£314,793.00
A3028	A3028 Larkhill Rd, Durrington leading to High Street, Bulford	Surfacing	£204,099.12
C291	Elston Lane, Orcheston	Surface Treatment	£26,592.69
	Total – Future sites		£1,456,076.85

Bradford on Avon			
Road	2018/19 Schemes	Treatment	
UC	Manor Lane, South Wraxall	Surface Treatment	£27,476.64
UC	B3109 Rushy Lane to C231 Poorhouses	Surface Treatment	£17,068.71
UC	Conkwell various 5 schemes	Surface Treatment	£60,000.00
A366	A366 Wingfield Crossroads to Trowbridge	Surface Treatment	£83,102.50
UC	Iford Hill, Westwood	Surfacing	£18,409.20
A363	A363 Frome Road, Bradford on Avon (Junction Rd to Train Station), Bradford on Avon	Surfacing	£94,800.75
	Total Schemes		£300,857.80
Road	Skid Resistance Improvements	Treatment	
B3107	B3107 Forewoods Common to Holt (Part) (976356)	Surfacing	£47,328.32
B3107	B3109 at South Wraxall Junction (979801)	Retexture	£1,095.90
B3109	B3109 at Norbin Farm to Box Fiveways (976422)	Retexture	£1,438.72
B3109	B3109 at Norbin Farm to Box Fiveways (976423)	Retexture	£4,675.84
B3108	B3108 Winsley Hill east of River Bridge (979748)	Retexture	£5,836.37
A366	A366 County Boundary to Wingfield Crossroads (979348, 975971, 975972 & 979347)	Retexture	£45,645.64
A366	B3109 Frome Rd at Oxstalls Farm (979773 & 976397)	Retexture	£5,732.40
B3109	B3109 Bradford Rd at County Boundary/Pomeroy Lane (979766)	Retexture	£1,719.72
	Total Skid Resistance		£113,472.91
Road	Reserve or future years sites – to be reviewed	Treatment	
C225	Church Lane, Freshford	Surfacing	£85,978.68
UC	Poulton, Bradford on Avon	Surfacing	£129,114.40
UC	The Star, Holt	Surfacing	£106,396.92
UC	Tynings Way/ Boswell Road/ Leslie Rise/ Hebden Road, Westwood	Surfacing	£244,341.60
A363	A363 Masons Lane, Bradford on Avon	Surfacing	£119,934.66
B3108	B3108 Winsley Hill	Surfacing	£341,659.68

Bradford on Avon			
Road	Reserve or future years sites (continued) – to be reviewed	Treatment	
UC	Uplands Close, Limpley Stoke	Surface Treatment	£8,343.91
	Total - Future Sites		£1,035,769.85

Calne			
Road	2018/19 Schemes	Treatment	
UC	Studley Hill, Studley	Surface Treatment	£12,500.00
C111/UC	Catcomb, New Zealand Area	Surface Treatment	£168,296.52
A4	A4 Pewsham to A342 Derry Hill Junction - Phase 1	Surfacing	£175,000.00
	Total - Schemes		£355,796.52
Road	Skid Resistance Improvements	Treatment	
A3102	A3102 Oxford Rd Rbt at Bypass (975360)	Retexture	£6,384.32
A3102	A3102 between Hilmarton & Goatacre at Widcombe Mill Bridge. Two sites (975371) (975372)	Retexture	£2,495.28
	Total Skid Resistance		£8,879.60
Road	Reserve or future years sites – to be reviewed	Treatment	
A4	A4 Pewsham to A342 Derry Hill Junction - Phase 2	Surfacing	£78,000.00
A3012	A3102 Oxford Rd, Calne	Surfacing	£275,341.44
A4	A4 London Rd Calne to Lower Compton (Sections)	Surfacing	£209,642.94
A4	A4 Cherhill Village	Surface Treatment	£88,876.92
C136	C136 Dumb Post to Hazelands to Studley	Surface Treatment	£58,150.26
	Total - Future Sites		£710,011.56

Chippenham			
Road	2018/19 Schemes	Treatment	
UC	Orchard Crescent, Chippenham	Surface Treatment	£17,908.00
UC	Orchard Road, Chippenham	Surface Treatment	£21,153.00
UC	Ripon Close, Chippenham	Surface Treatment	£25,215.53
UC	The Firs, Chippenham	Surface Treatment	£11,390.65
UC	Windsor Close, Chippenham	Surface Treatment	£16,599.02
C171	C171 Days Lane, Kington Langley	Surface Treatment	£110,614.77
A420	A420 Marshfield Road Arches to Park Lane, Chippenham	Surfacing	£81,978.89
A420	Park Lane, Chippenham	Surfacing	£110,745.80
A420	New Road, Chippenham	Surfacing	£68,429.51
A4	A4 Pewsham to Pewsham Way/London Road Roundabout	Surfacing	£73,000.00
C1	C1 Hullavington to Norton, Hullavington	Surfacing	£177,229.08
	Total Schemes		£714,264.25
Road	Skid Resistance Improvements	Treatment	
A420	A420 Allington Crossroads (979454)	Retexture	£1,618.56
A420	A420 Allington Crossroads (979455)	Retexture	£2,023.20
A350	A350 Badger Roundabout, West Cepen Way, Chippenham (979158)	Retexture	£1,633.73
A350	A350 Plough Crossroads Southbound (975760)	Refresh High Friction	£8,100.00
B4069	B4069 @ Langley Burrell Junction (976534, 979935, 976533 & 976534)	Retexture	£20,400.60
B4069	B4069 North of Jacksoms Lane to Kington Langley (979939)	Retexture	£15,578.64
B4069	B4069 between Sutton Benger & Christian Malford (976554)	Retexture	£9,829.38
B4069	B4069 at Swallett Gate Farm (976565)	Retexture	£8,345.70
B4069	B4069 at Swallett Gate Farm (979963)	Retexture	£927.30
B4122	B4122 Westbrook Farm to Junction 17 M4 (976579)	Retexture	£25,654.18
B4039	B4039 at Chippenham Golf Centre (976484) (979863)	Retexture	£7,086.82
C86	C86 Yatton Road, Biddestone (980361)	Retexture	£3,911.52
A420	A420 Giddeahall to Ford (979443)	Retexture	£23,233.08
A350	A350 Dual Southbound at Hillside Farm (975756)	Retexture	£2,739.75

Chippenham			
Road	Skid Resistance Improvements (continued)	Treatment	
A350	A350 Dual Northbound opposite Courtfield Farm (975745) (980390)	Retexture	£1,475.25
A350	A350 Dual Northbound north of KSM On Slip (975747) (980392)	Retexture	£0.00
A350	A350 Dual Northbound north of Pretty Chimneys (975749)	Retexture	£1,264.50
A350	A350 Dual Northbound south of Lower Swinley Farm (975750)	Retexture	£1,475.25
A429	A429 at Hullavington Junction (976091)	Retexture	£2,478.42
B4069	B4069 between Christian Malford & Friday Street (979954)	Retexture	£1,298.22
A420	A420 at Upper Wraxall Junction (979436)	Retexture	£2,911.16
A350	A350 Dual Northbound at KSM On Slip (980391)	Retexture	£1,264.50
	Total Skid Resistance		£143,249.76
Road	Reserve or future years sites – to be reviewed	Treatment	
UC	Cuttle Lane, Biddestone	Surfacing	£13,614.08
UC	Kilverts Close, Chippenham	Surfacing	£16,871.40
UC	Minster Way, Chippenham (Carriageway Repairs)	Carriageway Repairs	£8,479.66
UC	Pew Hill Service Road, Chippenham	Surfacing	£17,640.00
UC	Queens Crescent, Chippenham (Carriageway Repairs)	Carriageway Repairs	£10,860.00
UC	St Marys St/Emery Lane, Chippenham	Surfacing	£62,639.64
UC	The Oaks, Chippenham	Surfacing	£21,672.00
UC	Willow Grove, Chippenham	Surfacing	£9,553.00
UC	Old Road/Union Road, Chippenham	Surfacing	£73,551.00
UC	Bath Road, Chippenham (Bridge Centre to Town Bridge)	Surfacing	£158,700.24
A4	Bridge Centre Gyrotory Roundabout	Surfacing	£812,377.44
UC	Canterbury Street, Chippenham (Carriageway Repairs)	Surfacing	£1,230.00
UC	Westbrook Close, Chippenham	Surfacing	£33,447.96
UC	Clift Avenue, Chippenham	Surfacing	£69,716.49
UC	Conway Road, Chippenham	Surfacing	£49,036.68
UC	Foundry Lane, Chippenham	Surfacing	£32,032.64
UC	Hardens Mead, Chippenham	Surfacing	£238,742.50
UC	Lackham Circus, Chippenham	Surfacing	£12,678.12

Chippenham			
Road	Reserve or future years sites (continued) – to be reviewed	Treatment	
UC	Ladyfield Road, Chippenham	Surfacing	£310,286.40
UC	London Road Service Road, Chippenham (Hardens Mead)	Surfacing	£77,997.82
UC	Loyalty Street, Chippenham	Surfacing	£127,862.74
UC	Parkfields, Chippenham (Carriageway Repairs)	Carriageway Repairs	£1,815.00
UC	Rowden Lane, Chippenham	Surfacing	£18,045.72
UC	Southmead/Stockwood, Chippenham	Surfacing	£87,775.94
UC	Westmead Lane, Chippenham	Surfacing	£32,016.60
UC	Carnarvon Close, Chippenham	Surface Treatment	£12,371.34
UC	Berkley Close, Chippenham	Surface Treatment	£17,771.13
UC	Burleaze, Chippenham	Surface Treatment	£28,883.96
UC	Coniston Road, Chippenham	Surface Treatment	£46,325.08
UC	Greenway Lane 102-132, Chippenham	Surface Treatment	£13,990.02
UC	Plantation Road, Chippenham	Surface Treatment	£49,509.45
UC	Wood Lane, Chippenham	Surface Treatment	£92,476.73
UC	Cocklebury Lane, Chippenham	Surface Treatment	£20,519.68
UC	Birch Grove, Chippenham (Carriageway Repairs)	Carriageway Repairs	None
A420	A420 Broad Lane Allington to Bumpers Farm	TBC	None
UC	Bath Road Industrial Estate, Chippenham (Carriageway Repairs)	Carriageway Repairs	None
	Total - Future Sites		£2,580,490.46

Corsham			
Road	2018/19 Schemes	Treatment	
C155	Lacock, Hither Way to A342 Sandy Lane	Surface Treatment	£218,243.52
B3353	B3353 Gastard to Corsham	Surfacing	£130,269.62
UC	Dickens Avenue, Corsham	Surfacing	£46,352.46
	Total Schemes		£394,865.60
Road	Skid Resistance Improvements	Treatment	
C48	C48 Old Jockey to Box Fiveways (976911) (980322)	Retexture	£1,787.16
A350	A350 Lacock Traffic Signals (975730)	Retexture	£5,479.50
A350	A350 Lacock Traffic Signals (979147) (979148)	Resurface	£45,000.00
B4528	B4528 Lackham Roundabout to Chippenham (976169)	Retexture	£1,663.52
B4528	B4528 at Queens Bridge, Chippenham (976170)	Retexture	£1,820.88
B3353	B3353 Goodes Hill (Whitley to Gastard) (976441)	Retexture	£10,250.88
B3353	B3353 Goodes Hill (Whitley to Gastard) (976442)	Retexture	£3,956.48
A4	A4 Box, between Shockerwick & Middlehill (975981)	Retexture	£1,573.60
	Total Skid Resistance		£71,532.02
Road	Reserve or future years sites – to be reviewed	Treatment	
C37	Church Rise, Neston	Surfacing	£92,763.36
UC	A4 Copenacre, Corsham	Surfacing	£266,694.72
A365	A365 Box Fiveways to Atworth	Surface Treatment	£69,405.60
UC	Drewetts Mill, Colerne	Surface Treatment	£90,090.51
	Total Future Sites		£518,954.19

Devizes			
Road	2018/19 Schemes	Treatment	
C243	Whistley Road, Potterne	Surface Treatment	£229,349.52
UC	Sunnyside and Orchard Place, West Lavington	Surfacing	£34,004.90
A342	A342 Nursted Road, Devizes (Carriageway Repairs)	Surfacing	£86,698.66
UC	Brickley Lane & Jump Farm Road, Devizes (Roundabout Only)	Surfacing	£64,176.84
UC	Wharf Street, Devizes	Surfacing	£32,077.53
A342	A342 Rowde Village (Carriageway Repairs)	Surfacing	£23,304.00
	Total Schemes		£469,611.45
Road	Skid Resistance Improvements	Treatment	
A360	A360 Littleton Panell at Chocolate Poodle Railbridge (975831)	Retexture	£4,698.32
C20	C20 Worton at Woodborough House (976671)	Retexture	£5,226.60
A342	A342 Stert to Etchilhampton Junction (975543)	Retexture	£3,237.12
A342	A342 at Wedhampton (975545) (978970)	Retexture	£3,135.96
C8	C8 Horton Village at Canal Bridge (976719)	Retexture	£1,580.91
	Total Skid Resistance		£17,878.91
Road	Reserve or future years sites – to be reviewed	Treatment	
C20	Grove Road Market Lavington	Surfacing	£134,578.00
UC	Russell Mill Lane, Littleton Panell	Surfacing	£32,812.00
B3098	B3098 Little Cheverell, Pear Tree junction (Carriageway Repairs)	Carriageway Repairs	£6,297.00
A342	A342 Nursted Road Roundabout (Windsor Drive), Devizes	Surfacing	£72,017.59
C246	Court Hill, Potterne	Surface Treatment	£24,913.77
UC	Netherstreet, Bromham	Surface Treatment	£51,360.80
C255	Cock Road, Rowde	Surface Treatment	£44,999.60
UC	Kings Road Easterton	Surface Treatment	£54,141.12
C246	Worton Road, Cuckolds Green, Potterne	Surface Treatment	£95,811.66
C254	The Green, Great Cheverell	Surface Treatment	£116,847.36

Devizes			
C249	Conscience Lane, Rowde to Devizes	Surface Treatment	£195,597.00
Road	Reserve or future years sites (continued) – to be reviewed	Treatment	
A361	A361 Gains Lane, Devizes	No Action	None
	Total - Reserve Sites		£829,375.90

Malmesbury			
Road	2018/19 Schemes	Treatment	
C1	C1 Hullavington to Norton, Hullavington	Surface Treatment	£51,916.68
C94	Littleton Drew to Alderton	Surface Treatment	£83,048.70
UC	Parklands/Exton Close, Malmesbury	Surface Treatment	£49,485.36
UC	Bremilham Rise, Malmesbury	Surface Treatment	£31,486.05
UC	Corn Gastons/Alexander Road, Malmesbury	Surface Treatment	£76,367.01
B4040	B4040 Bristol Street, Malmesbury	Surfacing	£67,790.00
A429	A429 Crudwell Village (Carriageway Repairs)	Surfacing	£70,576.35
B4042	B4042 Swindon Road, Malmesbury	Surfacing	£172,121.52
	Total Schemes		£602,791.67
Road	Skid Resistance Improvements	Treatment	
A429	A429 North of Crudwell (979494) (976122)	Retexture	£2,832.48
B4040	B4040 Pinkney (976491)	Retexture	£1,045.32
	Total Skid Resistance Sites		£3,877.80
Road	Reserve or future years sites – to be reviewed	Treatment	
UC	Newnton Grove, Malmesbury	Surfacing	£17,657.64
UC	St Aldhelms Road to Burnham Rd, Malmesbury (Carriageway Repairs)	Carriageway Repairs	£50,404.55
UC	Athelstan Road, Malmesbury	Surfacing	£25,458.80
UC	Park Road, Malmesbury	Surfacing	£91,768.32
UC	Old Alexander Road, Malmesbury	Surfacing	£53,338.32
B4042	B4042 West of Brinkworth (Carriageway Repairs)	Carriageway Repairs	TBC
	Total - Future Sites		£238,627.63

Marlborough			
Road	2018/19 Schemes	Treatment	
UC	Ewins Hill Byway, Aldbourne (Carriageway Repairs)	Carriageway Repairs	£30,000.00
A345	A345 Clench Common Bends	Surface Treatment	£75,306.00
A4361	A4361 Broad Hinton to County Boundary	Surface Treatment	£84,920.22
B4192	B4192 South of Aldbourne to Preston	Surface Treatment	£86,636.40
UC	Manor Park, Froxfield Village	Surface Treatment	£19,384.76
A4	A4 London Road, Marlborough	Surfacing	£162,764.06
B3052	George Lane, Marlborough	Surfacing	£149,374.50
	Total Schemes		£608,385.94
Road	Skid Resistance Improvements	Treatment	
B4001	B4001 East Soley Farm to County Boundary (976745)	Retexture	£730.60
B4001	B4001 East Soley Farm to County Boundary (980149)	Retexture	£2,776.28
C6	C6 At Raffin Stud to County Boundary (976716)	Retexture	£4,394.84
B4192	B4192 Whittonditch, Knighton (979993)	Retexture	£4,012.68
B4192	B4192 South of Aldbourne at Preston (979985)	Retexture	£3,416.96
B4192	B4192 South of Aldbourne at Hoddes Bridge (979983)	Retexture	£1,466.82
B4192	B4192 South of Aldbourne at Hoddes Bridge (976587)	Retexture	£1,629.80
A346	A346 Bay Bridges, North of Marlborough (975647)	Retexture	£1,213.92
C6	C6 Poulton Hill at Rabley Road (980085)	Retexture	£1,955.76
A4	B4003 The Avenue, West Kennet to Avebury (976731)	Retexture	£2,225.52
A4	B4003 The Avenue, West Kennet to Avebury (980141)	Retexture	£2,472.80
A4	A4 Beckhampton to Silbury (976032)	Retexture	£3,324.23
A361	A361 Bishops Cannings to Beckhampton (979301)	Retexture	£2,793.14
A4361	A4361 Mill Lane, Winterbourne Monkton (979516)	Retexture	£1,219.54
C38	C38 Lockeridge to East Kennet junction (976875)	Retexture	£10,116.00
C38	C38 Lockeridge to East Kennet junction (976872)	Retexture	£8,008.50
C38	C38 Lockeridge to East Kennet junction (980286)	Retexture	£4,215.00
A4	A4 @ Silbury Cottages (976037)	Retexture	£2,967.36

Marlborough			
Road	Skid Resistance Improvements (continued)	Treatment	
A4	A4 at Silbury Hill Car Park (979398)	Retexture	£2,045.68
	Total Skid Resistance Sites		£60,985.43
Road	Reserve or future years sites – to be reviewed	Treatment	
C18/UC	The Parade Kennet Place, Marlborough	Surfacing	£103,251.36
UC	The Garlings, Aldbourne	Surfacing	£34,277.14
UC	Vicarage Close, Marlborough	Surfacing	£30,532.32
A4	A4 Silbury Hill to Fyfield	Surfacing	£347,817.86
A4	A4 Fyfield to Clatford	Surfacing	£364,489.73
A346	A346 Marlborough to Swindon Boundary (Carriageway Repairs)	Surfacing	£194,544.00
A4361	A4361 North of Avebury to County Boundary (Sections)	Carriageway Repairs	TBC
UC	St Margarets Mead Estate, Marlborough	Surface Treatment	£217,066.92
UC	Elcot Lane, Marlborough	Surface Treatment	£98,107.00
A345	A345 Clench Common to Marlborough	Surface Treatment	£122,127.00
	Total Future Sites		£1,512,213.33

Melksham			
Road	2018/19 Schemes	Treatment	
C212	Melksham Lane, Broughton Gifford	Surface Treatment	£137,551.20
A365	A365 Box Fiveways to Atworth (Part)	Surfacing	£98,250.98
A361	A361 Seend Village (Carriageway Repairs)	Carriageway Repairs	£90,000.00
UC	St Marys, Steeple Ashton	Surfacing	£27,233.56
	Total Schemes		£353,035.74
Road	Skid Resistance Improvements	Treatment	
C20	C20 Inmarsh at Seend Bridge Farm (980130)	Retexture	£814.90
C20	C20 Inmarsh at Seend Bridge Farm (980080)	Retexture	£2,444.70
A361	A361 The Lamb on The Strand (979261)	Retexture	£1,348.80
A365	A365 Sells Green at The Three Magpies PH (979345)	Retexture	£1,382.52
C382	C382 Spa Road/Snowberry Lane Roundabout (976889)	Retexture	£6,902.48
C395	C395 Semington Road o/s 595 to 595a (976963)	Retexture	£955.40
B3107	B3107 Challeymead to Farmers Rbt, Melksham (976376)	Retexture	£14,522.08
B3107	B3107 Melksham to Holt at Mill Lane (976371)	Retexture	£4,970.89
B3107	B3107 Melksham Road at East Lane (976366)	Retexture	£1,219.54
B3105	B3106 Holt Road to Causeway (979729)	Retexture	£18,343.68
B3109	A365 at Neston Park Farm Shop. (975951)	Retexture	£4,968.08
B3353	B3353 Goodes Hill (Whitley to Gastard) (976440)	Refresh High Friction	£15,116.80
	Total Skid Resistance Sites		£72,989.87
Road	Reserve or future years sites – to be reviewed	Treatment	
A3102	TBC - Melksham, A3102 Sandridge Rd to Bypass (Carriageway Repairs)	Carriageway Repairs	£85,000.00
UC	Willow Crescent, Broughton Gifford	Surfacing	£57,826.44
UC	Coburg Square, Melksham	Surfacing	£12,348.00
UC	Church Street, Steeple Ashton	Surfacing	£57,456.00
A350	A350 Stoney Gutter, southbound (Carriageway Repairs)	Carriageway Repairs	£87,566.16
C381	King Street, Semington Road, Melksham	Surfacing	£179,623.08
UC	Marti Close, Melksham	Surfacing	£42,728.15

Melksham			
Road	Reserve or future years sites (continued) – to be reviewed	Treatment	
UC	Old Road, Beanacre	Surfacing	£60,507.72
C395	Pathfinder Way, Bowerhill (Spa Rd to Ind. Est.)	Surfacing	£122,561.96
A3102	Sandridge Common 40mph extents Blackmore House, etc	Surfacing	£211,716.40
A350	A350 Melksham Dual Asda to Avon Road Rbt (Carriageway Repairs)	Carriageway Repairs	NPIF
A350	A350 Semington Bypass (Carriageway Repairs)	Carriageway Repairs	£128,935.48
C165	Lower Woodrow Rd & Forest Lane (Melksham to Lacock)	Surface Treatment	£123,361.92
	Total Future Sites		£1,169,631.31

Pewsey			
Road	2018/19 Schemes	Treatment	
UC	Heath Lane, Buttermere	Surface Treatment	£42,077.28
UC	Smay Down Lane, Oxenwood	Surface Treatment	£13,005.30
A345	A345 Oare Village	Surface Treatment	£39,567.84
A345	A345 Woodbridge Rbt to Pewsey	Surface Treatment	£179,527.00
UC	Milkhouse Water, Pewsey	Surface Treatment	£16,150.38
C30	Church Street, Great Bedwyn	Surface Treatment	£60,000.00
UC	Raffin Lane, Pewsey	Surfacing	£83,447.83
C38	Broad Street, Woodborough	Surfacing	£63,390.00
	Total Schemes		£497,165.63
Road	Skid Resistance Improvements	Treatment	
A342	A342 East of Chirton (978978)	Retexture	£3,372.00
A342	A342 Charlton St Peter to Wilsford (978983)	Retexture	£1,180.20
B3087	B3087 Pewsey High Street at Ball Road (979571)	Retexture	£1,011.60
A346	A346 Burbage Bypass Rbt (975638)	Retexture	£3,416.96
A338	A338 Burbage Rbt to West Grafton (975499)	Retexture	£1,258.88
C74	C74 Jockey Green, Great Bedwyn (980347)	Retexture	£1,315.08
A4	A4 at Little Bedwyn junction (976067)	Retexture	£4,855.68
C38	C38 East Kennett to New Town (980302)	Retexture	£8,182.72
C38	C38 Alton Barnes to East Kennet (976882)	Retexture	£22,879.02
C8	C8 Alton Road, West Stowell (976682)	Retexture	£4,091.36
C8	C8 Alton Road, West Stowell (976727)	Retexture	£3,126.97
	Total Skid Resistance Sites		£54,690.47
Road	Reserve or future years sites – to be reviewed	Treatment	
UC	Astley Close, Pewsey	Surfacing	£69,320.16
UC	Kelston Road, Little Bedwyn	Surfacing	£36,667.12
A338	A338 Burbage Bends	Surfacing	TBC
A345	A345 Oare to Clench Common	Surface Treatment	£61,630.14
C269	Sunnyhill Lane, Pewsey	Surface Treatment	£68,076.62

Pewsey			
Road	Reserve or future years sites (continued) – to be reviewed	Treatment	
A338	A338 Burbage to County Boundary	Surface Treatment	£549,669.12
	Total Future Sites		£785,363.16

RWB & Cricklade			
Road	2018/19 Schemes	Treatment	
B4042	B4042 Junction with B4696 to Coped Hall R/A (Part)	Surface Treatment	£84,238.35
C124	C124/C116 Eysey to Marston Maisey	Surface Treatment	£84,704.00
C114	C114 - A419 to Kempford	Surface Treatment	£121,447.00
UC	The Beeches, Lydiard Millicent	Surfacing	£42,194.88
C415	Station Road, Royal Wootton Bassett	Surfacing	£96,642.00
	Total Schemes		£429,226.23
Road	Skid Resistance Improvements	Treatment	
A3102	A3102 at Tockenham Corner (975390)	Retexture	£6,111.75
A3102	A3102 Vastern Wharf to Breach Lane, RWB (975393)	Retexture	£4,158.80
A3102	A3102 High Street, Royal Wootton Bassett (975400)	Retexture	£1,846.17
A3102	A3102 Swindon Rd, Royal Wootton Bassett at The Churchill (975408)	Retexture	£1,618.56
A3102	A3102 Bincknoll Rbt to M4 J16 (975410)	Retexture	£4,585.92
A3102	A3102 Vastern at Breach Lane (975394)	Retexture	£1,039.70
	Total Skid Resistance Sites		£19,360.90
Road	Reserve or future years sites – to be reviewed	Treatment	
C122	New Road, Royal Wootton Bassett	Surfacing	£139,439.16
B4553	B4553 Common Platt to County Boundary	Surfacing	£88,864.40
UC	Vasterne Close, Purton (Carriageway Repairs)	Carriageway Repairs	£0.00
UC	Hunts Mill Lane, Royal Wootton Bassett (Carriageway Repairs)	Carriageway Repairs	£13,997.00
C47	Tadpole Lane/Hayes Knoll Lane	Surfacing	£57,586.52
UC	Witts Lane/Hoggs Lane/Vastern Hill Byway, Purton	Surfacing	£98,120.00
UC/C129	C129 Hollow Way, Bradenstoke	Surface Treatment	£69,204.96
UC	Stoke Common Lane, Purton Stoke	Surface Treatment	£20,293.00
B4040	B4040 Chelworth to Cricklade	Surface Treatment	£148,236.48
B4553	B4553 South of Cricklade	Surface Treatment	£166,706.50
B4553	B4553 Cross Lanes to Common Platt	Surface Treatment	£137,990.16

RWB & Cricklade			
Road	Reserve or future years sites (continued) – to be reviewed	Treatment	
B4553	B4553 Packhorse Lane, Purton (Carriageway Repairs)	Carriageway Repairs	£95,698.56
C129	Clack Hill Bradenstoke	Surface Treatment	£21,146.40
C291	Pond Lane, Purton Stoke	Surface Treatment	£53,989.44
UC	Bradens/Bradene Close, Royal Wootton Bassett	Surface Treatment	£4,971.66
UC	Dunnington Road, Royal Wootton Bassett	Surface Treatment	£17,978.91
UC	Eastwood Avenue, Royal Wootton Bassett	Surface Treatment	£9,827.70
UC	Englefield, Royal Wootton Bassett	Surface Treatment	£10,846.44
UC	Homefield, Royal Wootton Bassett	Surface Treatment	£13,042.62
UC	Horsell Close, Royal Wootton Bassett	Surface Treatment	£6,108.59
UC	Sorrell Close, Royal Wootton Bassett	Surface Treatment	£16,687.82
UC	Templars Firs, Royal Wootton Bassett	Surface Treatment	£36,979.13
UC	Buryfields, Lydiard Millicent	Surface Treatment	£10,868.28
UC	Chestnut Springs, Lydiard Millicent	Surface Treatment	£154,102.19
C126	Collins Lane Purton	Surface Treatment	£68,564.16
C16	Stone Lane, Lydiard	Surface Treatment	£100,218.00
C120	C120 Trow Lane, Tockenham	Surface Treatment	£64,571.76
C76	C76 Chessley Hill, Tockenham Wick	Surface Treatment	£62,404.55
UC	Bentham Lane, Purton Stoke	Surface Treatment	£75,317.27
UC	Bowds Lane	Surface Treatment	£57,920.38
	Total Future Sites		£1,821,682.04

Salisbury			
Road	2018/19 Schemes	Treatment	
UC	Westwood Rd, Salisbury	Surface Treatment	£34,237.38
UC	Endless Street, Salisbury	Surfacing	£133,000.00
A30	A30 Parkwood Roundabout	Surfacing	£95,922.75
	Total Schemes		£263,160.13
Road	Skid Resistance Improvements	Treatment	
A338	A338 Harnham Gyratory (975440)	Retexture	£11,464.80
A360	A360 Devizes Road, Salisbury at Fugglestone Red (979176)	Retexture	£1,337.56
	Total Skid Resistance Sites		£12,802.36
Road	Reserve or future years sites – to be reviewed	Treatment	
UC	Blue Boar Row, Salisbury (Part)	Surfacing	£24,500.00
UC	St Francis Road, Salisbury (Carriageway Repairs)	Carriageway Repairs	£15,354.20
UC	Harcourt Terrace, off Mill Road, Salisbury	Surfacing	£41,259.46
UC	Longland, off Wilton Road, Salisbury	Surfacing	£24,144.19
UC	Hedley Davis Court, Salisbury	Surfacing	£15,855.84
A338	A338 Downton Rd, Britford	Surfacing	£944,962.41
UC	Pinewood Way & Cedar Close, Salisbury	Surfacing	£85,142.74
UC	Telford Road, Churchfields, Salisbury	Surfacing	£143,000.00
UC	Hadrians Close, Salisbury	Surfacing	£13,933.04
UC	Ashfield Road, Salisbury	Surfacing	£48,047.12
UC	St Edmonds Church Street, Salisbury (Carriageway Repairs)	Carriageway Repairs	£7,524.72
UC	Highbury Avenue, Salisbury (Carriageway Repairs)	Carriageway Repairs	£11,152.68
UC	Middleton Road, Salisbury	Surfacing	£64,915.20
UC	Norfolk Road, Salisbury	Surfacing	£0.00
C56	Philips Lane/Gradidge Lane, Salisbury	Surface Treatment	TBC
UC	Romer Road, Harnham	TBC	TBC
	Total Future sites		£1,439,791.60

South West Wiltshire			
Road	2018/19 Schemes	Treatment	
UC	Lower Chicks Grove to Lagpond Lane (past The Compasses Inn). (C24 to C317)	Surface Treatment	£206,632.80
UC	Elcombe Lane, Alvediston	Surface Treatment	£82,835.00
C380	C380 High Street to Gasper Street, Stourton	Surface Treatment	£77,140.00
C297	Willoughby Hedge to West Knoyle (The Street)	Surface Treatment	£33,709.00
C278	Wolverton to B3092	Surface Treatment	£19,257.60
UC	Sling Orchard, Fovant	Surfacing	£18,705.96
A350	A350 East Knoyle, The Turnpike	Surfacing	£238,826.00
B3092	Castle Street, Mere - Carriageway Repairs	Surfacing	£30,000.00
C62	Semley Bennett Arms to Railbridge (Carriageway Repairs)	Carriageway Repairs	£60,000.00
C25	C25 Beckford Xrds to Hindon Arch (Carriageway Repairs)	Carriageway Repairs	£32,626.34
B3081	B3081 Zig Zag Hill (Carriageway Repairs)	Carriageway Repairs	£35,000.00
	Total Schemes		£834,732.70
Road	Skid Resistance Improvements	Treatment	
B3092	B3092 North of Stourton (979642) (976267)	Retexture	£2,292.96
B3092	B3092 North of Stourton (979641) (976266)	Retexture	£4,203.76
B3092	B3092 North of Stourton (976264) (979639)	Retexture	£2,675.12
B3092	B3092 North of Stourton (976262) (979637)	Retexture	£13,538.58
A30	A30 North of Sands Lane to Horwood Farm (975244) (975243)	Retexture	£9,401.14
A30	A30 North of Horwood Farm to Ansty (978753)	Retexture	£1,854.60
A30	A30 Ansty Junction (978754)(975248)	Retexture	£25,964.40
A30	A30 Ansty Junction (978755)	Retexture	£7,081.20
A30	A30 Compton Chamberlayne (975264)	Retexture	£1,916.42
A30	A30 East of Compton Chamberlayne at Naishes Farm (978775)	Retexture	£6,114.56
A30	A30 at Upper Hurdcot Farm (975273)	Retexture	£2,866.20
B3089	B3089 nr Cemetery @ Barford St Martin (979625)	Retexture	£1,095.90

South West Wiltshire			
Road	Skid Resistance Improvements (continued)	Treatment	
C12	C12 Coombe Bissett, Homington Road (980063)	Retexture	£2,585.20
B3089	B3089 Teffont to Dinton at Park Farm Cottage (976239)	Retexture	£944.16
B3089	B3089 Btwn Fonthill Bishop and Chilmark @ Ridge Farm (979607)	Retexture	£19,065.85
B3089	B3089 Stagger Cross to Hindon (976214)	Retexture	£9,233.66
B3089	B3089 Stagger Cross to Hindon (976211)	Retexture	£3,484.40
	Total Skid Resistance Sites		£114,318.11
Road	Reserve or future years sites – to be reviewed	Treatment	
UC	Bells Lane, Zeals	Surfacing	£123,369.12
A30	A30 Shaftesbury Road, Wilton	Surfacing	£177,435.86
UC	Seniors Farm Lane Semley	Surfacing	£52,028.00
UC	Weaveland Road, Tisbury	Surfacing	£47,831.28
B3092	Castle Street, Mere	Surfacing	£180,000.00
A350	A350 Hart Hill	Surfacing	£644,392.00
C326	Back Lane Bowerchalke (Carriageway Repairs)	Carriageway Repairs	£75,705.84
C279	Dukes Lane Kilmington	Surfacing	£73,683.67
UC	Grovely Road Barford St Martin	Surface Treatment	£100,778.00
C277	C277 Teffont Magna to Dinton	Surface Treatment	£204,687.07
C308	Crate Lane Street Lane loop	Surface Treatment	£186,266.64
B3089	B3089 Stagger Cross to Barford St Martin	Surface Treatment	TBC
	Total Future Sites		£1,866,177.48

Southern Wiltshire			
Road	2018/19 Schemes	Treatment	
C12	C12 Odstock Village	Surface Treatment	£29,415.00
UC	South Lane, Nomansland	Surface Treatment	£16,822.46
C336	C336 Witherington Road, Alderbury	Surface Treatment	£170,574.40
UC	Pineview Close, Redlynch	Surfacing	£50,601.60
UC	Slab Lane, Redlynch - 2 sections	Surfacing	£76,329.86
UC	Avon Drive & Eyres Drive, Alderbury	Surfacing	£23,899.16
	Total Schemes		£367,642.48
Road	Skid Resistance Improvements	Treatment	
A338	A338 Charlton All Saints at Church Lane (Former Stag Inn) (978870)	Retexture	£1,095.90
A338	A338 Braemore Rd, Downton (975423)	Retexture	£2,592.23
A27	A27 Whiteparish @ Cowesfield Green (975226)	Retexture	£2,326.68
A27	A27 Whiteparish @ Cowesfield Green (978735)	Retexture	£1,357.23
A338	A338 St Thomas' Rbt North, Salisbury (975443) (978878)	Surfacing	£36,767.28
A27	A27 Whiteparish @ Richmond Farm (975222)	Retexture	£955.40
A27	A27 Whiteparish @ Tipplefield Farm (978731)	Retexture	£1,528.64
A27	A27 Whiteparish @ Dairy House Farm (978733)	Retexture	£1,596.08
A27	A27 Whiteparish @ Cowesfield Lodge (978737)	Retexture	£1,663.52
A27	A350 East Knoyle at Black House Farm (979100)	Retexture	£1,011.60
	Total Skid Resistance Sites		£50,894.56
Road	Reserve or future years sites – to be reviewed	Treatment	
C56	The Portway between Beehive and Castlegate Rbts	Surfacing	£65,808.20
UC	Parkwater Road, Whiteparish	Surfacing	£155,551.20
UC	Church Lane, Farley	Surfacing	£136,607.34
A27	A27 Whiteparish 30mph extents	Surfacing	£462,400.27
A27	A27 Whiteparish 40mph to Parkwater Rd Cowesfield Green	Surface Treatment	£28,023.60
B3080	B3080 Downton to Woodfalls	Surface Treatment	£142,658.88

Southern Wiltshire			
Road	Reserve or future years sites (continued) – to be reviewed	Treatment	
C321	C321 Pitton Road, Whiteway, Whitehill to Farley	Surface Treatment	TBC
UC	Goggs Lane, Redlynch	Surface Treatment	TBC
	Total Future Schemes		£991,049.49

Tidworth			
Road	2018/19 Schemes	Treatment	
A345	A345 Enford to Netheravon	Surface Treatment	£203,660.64
	Total Schemes		£203,660.64
Road	Skid Resistance Improvements	Treatment	
A360	A360 at Gore Cross Farm (979216)	Retexture	£899.20
A345	A345 at West Chisenbury (975610)	Retexture	£1,348.80
B3083	B3083 Winterbourne Stoke (980167)	Retexture	£5,754.88
	Total Skid Resistance Sites		£8,002.88
Road	Reserve or future years sites – to be reviewed	Treatment	
UC	Wylve Road, Tidworth	Surfacing	£121,093.00
C256	Shoddesden Lane, Ludgershall	Surfacing	£8,830.08
UC	Hei Lin Way, Ludgershall	Surfacing	£33,307.85
UC	Mill Drove, Collingbourne Kingston (Carriageway Repairs)	Carriageway Repairs	£42,297.27
C256	Hookwood Lane, Upper Chute	Surfacing	£53,625.17
A342	A342 Andover Rd Ludgershall	Surfacing	£504,394.17
A342	A342 Upavon 30mph to Compton	Surface Treatment	£113,727.90
C256	Biddesden Lane to Lower Chute	Surface Treatment	£101,618.63
	Total Future Sites		£978,894.07

Trowbridge			
Road	2018/19 Schemes	Treatment	
UC	Newleaze, Hilperton	Surface Treatment	£55,781.00
UC	Whaddon Lane, Hilperton	Surface Treatment	£83,542.71
C49	West Ashton Road, Trowbridge Sections A & B	Surfacing	£182,251.25
C372	Timbrell Street, Trowbridge (Carriageway Repairs)	Carriageway Repairs	TBC
B3106	Islington, Trowbridge (Carriageway Repairs)	Carriageway Repairs	TBC
	Total Schemes		£321,574.96
Road	Skid Resistance Improvements	Treatment	
B3109	B3109 Bradford Rd at County Boundary/Pomeroy Lane (976392)	Retexture	£3,439.44
A361	A361 Southwick between Poplar Tree Lane & Green Lane (979237)	Resurface	£49,902.64
	Total Skid Resistance Sites		£53,342.08
Road	Reserve or future years sites – to be reviewed	Treatment	
A363	Phillips Way Roundabout, North Bradley	Surfacing	£81,699.88
UC	Court Street, Trowbridge	Surfacing	£45,208.00
UC	Maple Grove, Trowbridge	Surfacing	£59,983.56
C361	Mortimer Street, Trowbridge	Surfacing	£82,368.16
UC	Eastbourne Gardens, Trowbridge	Surfacing	£66,024.00
UC	Carisbrooke Crescent, Trowbridge	TBC	£20,000.00
UC	Church Lane, North Bradley	Surfacing	£156,916.00
B3097	Hawkeridge Road, Yarnbrook	Surfacing	£129,990.30
	Total Future Sites		£642,189.90

Warminster			
Road	2018/19 Schemes	Treatment	
A350	A350, South of Longbridge Deverill to Lower Pertwood	Surface Treatment	£197,472.00
C10	C10 Boyton Bends	Surface Treatment	£8,323.14
A350	A350 Crockerton (Part)	Surfacing	£150,000.00
	Total Schemes		£355,795.14
Road	Skid Resistance Improvements	Treatment	
B390	B390 West of Chitterne (976459)	Retexture	£1,955.76
B3095	B3095 Hill Deverill at Manor Farm (976305)	Retexture	£2,630.16
A350	A350 Longbridge Deverill	Retexture	£1,618.56
	Total Skid Resistance Sites		£6,204.48
Road	Reserve or future years sites – to be reviewed	Treatment	
C10	Copheap Lane, Warminster	Surfacing	£218,751.82
UC	Sambourne Road, Warminster	Surfacing	£133,169.00
UC	Geys Hill - Stalls Lane, Dertfords (Corsley)	Surface Treatment	£38,779.00
UC	Huntenhull Green, Corsley	Surface Treatment	£13,959.30
UC	Short Street, Chalcot	Surface Treatment	£12,015.60
UC	Cley Hill Farm, Corsley	Surface Treatment	£17,528.64
C10	Bishopstrow Road, Warminster	Surface Treatment	£121,445.28
UC	UC Upton Scudamore to A350	Surface Treatment	£9,326.41
C364	Station Road, Warminster	Surfacing	£65,110.50
UC	Fairfield Road, Warminster	Surfacing	£69,601.90
C360	Deverill Road, Warminster	TBC	TBC
B390	B390, Chitterne	TBC	TBC
C22	Townsend, Chitterne	TBC	TBC
A3098	Thoulstone (A36 On/Off Slips)	TBC	TBC
UC	u/c Mill Farm Road, Heytesbury (10)	TBC	TBC
	Total Future Sites		£699,687.45

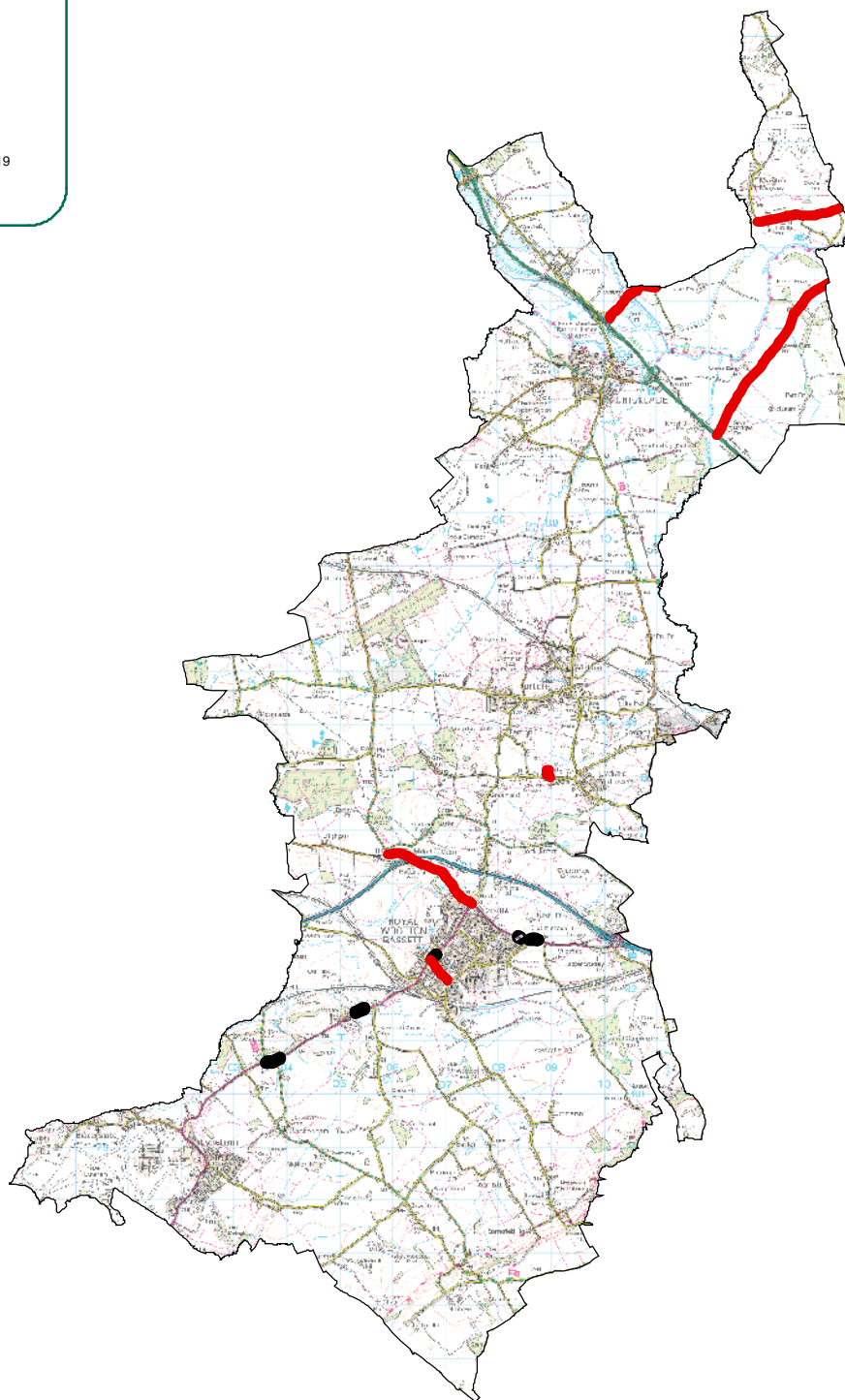
Westbury			
Road	2018/19 Schemes	Treatment	
UC	Old Dilton Road, Westbury	Surface Treatment	£21,575.40
UC	Coombe Lane, Bratton	Surface Treatment	£13,018.44
UC	Coulston Hollow, Coulston	Surface Treatment	£24,726.44
UC	Long Hollow, Edington	Surface Treatment	£61,102.80
UC	Shepherds Mead, Dilton Marsh (Carriageway Repairs)	Carriageway Repairs	£13,365.38
UC	Newtown, Westbury	Surfacing	£94,872.96
	Total Schemes		£228,661.42
Road	Skid Resistance Improvements	Treatment	
B3097	B3097 North of Link Rd, West Wilts Ind. Est. (980185)	Retexture	£2,259.24
	Total Skid Resistance Sites		£2,259.24
Road	Reserve or future years sites – to be reviewed	Treatment	
UC	Frogmore Road, Westbury	Surfacing	£102,538.00
UC	Hawkeridge Road, Westbury	Surfacing	£48,484.80
UC	Dilton Lane, Upton Scudamore	Surfacing	TBC
UC	Quartermaster Road, Westbury	Surfacing	£441,545.63
A350	A350 Westbury - Warminster Rd, etc (Carriageway Repairs)	Carriageway Repairs	TBC
	Total Future Sites		£592,568.43

Legend

Repair Sites 2018/19

Surfacing Sites 2018/19

Skid Resistance Sites 2018/19





Royal Wootton Bassett and Cricklade Community Identified Priorities Newsletter. March 2018

Children and Young People

RWB and Cricklade Community Area

What has been done so far:

1. A **mental health themed ‘takeover’** of the Area Board was held on 10th January 2018 to raise awareness of mental health and wellbeing, increase understanding and reduce stigma and discrimination.
2. Working with public health, a new offer to help schools **‘Beat the Bugs’** and so reduce school absence is available to local primary schools. Please contact your CEM if your primary school is interested in having a fun, interactive session with a public health nurse to help reduce the spread of infection, alexa.davies@wiltshire.gov.uk, 01249 706610.

Priorities November 2016

1. Mental and emotional health (65.12%)
2. Educational attainment (63.95%)
3. Positive leisure time activities (55.81%)

Wiltshire Wildlife Trust have been working with RWB Academy, primary schools, MOD Lyneham and community groups to spread the reduce, reuse recycle message. They have capacity to work with a few more schools, so do get in touch if your school would like to be involved.



3. **Community Mentoring And Support (CMAS)** provide positive leisure time activities for young people through their Area Board commission in Cricklade, RWB and Lyneham. This includes running a series of local youth groups, doing targeted youth work to address specific issues with the groups, personal development and mentoring for the young people involved.

In Royal Wootton Bassett, volunteer Cllr Sue Hughes from RWB town council is working with Wiltshire Council and other partners to develop a **local youth network** for the town, bringing together young people and key stakeholders to create a forum where local needs can be identified and youth voices heard.

As the weather warms up, the **Big Pledge** is coming! The Big Pledge is Wiltshire Council’s active health campaign, encouraging people to get up and move more for a host of health benefits. We will be encouraging people of every age to get behind this eight-week campaign, which opens for registration from **16th April** and runs from 14th May until 8th July.

This year will be linked with the Football World Cup in Russia and the main change from previous years is that it will be a challenge measuring your active minutes as opposed to your distance covered.



Royal Wootton Bassett and Cricklade Community Identified Priorities Newsletter. March 2018

Community Safety

RWB and Cricklade Community Area

What has been done so far:

1. Purton Parish Council have been successful in securing match funding from the Area Board community grant scheme for installation of a CCTV system at the Village Centre, Church Street. After spates of vandalism and anti-social behaviour, working with the police and associated bodies the parish council was advised to gain the added security and deterrent of CCTV. A combined working party and supplier knowledge allowed a system to be installed that not only recognises movement and activity at night but also has Vehicle Number Plate Recognition.

The system is now installed and gives greater security for the buildings and the associated users of the clubs and outside space. A noticeable lack of activity has already been recorded and a reduction in associated issues.

2. The Community Area Transport Group continues to work towards making highways improvements, (please see CATG report). The CATG process is being reviewed in order to make it simpler for people to use well and understand.

This is happening alongside promotion of the **My Wiltshire App** as a means of reporting issues directly to the Wiltshire Council services which can address them, e.g. as a way to report potholes direct to the appropriate service. An interactive session on how to use the My Wiltshire app will be coming up at a future Area Board meeting, so look out for this to learn more!

Dorset & Wiltshire Fire and Rescue Service have launched a campaign targeted at parking which makes it impossible for vehicles to get through certain streets in an emergency. Please see the flyer in the image at the bottom of this page as an example of their message and think of them when parking on narrow streets.

IAMROADSMART is offering a discounted **YOUNG DRIVER INITIATIVE** to increase road safety amongst our younger drivers. Contact Chris Gleed 01793 773214 for more information.



Official Provider



Priorities November 2016

1. Anti-social behaviour (70.59%)
2. Highway safety (63.53%)
3. Domestic violence (50.59%)

3. The Victim Support service is available to support anyone living with domestic abuse, see here for further information: <https://www.victimsupport.org.uk/>



Royal Wootton Bassett and Cricklade Community Identified Priorities Newsletter. March 2018

Culture

RWB and Cricklade Community Area

What has been done so far:

Celebrating Age events continue to be a roaring success across the community area, with the most recent being a reminiscence show and tell session with Purton Historical Society and Wiltshire Museum at Purton Friendship group on Friday 9th February.

This built on the wonderful 'Journey through the dance bands of the 1920s-40s' at Ridgeway House, The Lawns, Royal Wootton Bassett with Duncan Galloway, band leader of the Pasadena Roof Orchestra and 'Around the World in 80 Days', which was performed by Angela Laverick at Lyneham Village Hall, complete with a fish and chips lunch for the 3M's memory group.

This monthly programme of cultural events has been brought into the local area funded mainly by the Arts Council and supported by the Area Board. Events will initially be free of charge and are targeted towards celebrating our older people and their lives well lived.

The next event is: 'The Audition' - a juke-box opera on your doorstep, at the REME Museum on Wednesday 30th May from 2.00-4.00pm.

Brace yourself for an hilarious, singalong, light-hearted and surprising performance of some of the best bits of opera. Written by popular playwright Rachel Barnett, directed by award-winning director Helen Eastman and featuring internationally renowned singers. While you are there, why not stop for lunch at the lovely Crowns Café before the show?

Places are limited, so booking is necessary for this special event. Please contact your community engagement manager on alexa.davies@wiltshire.gov.uk or 01249 706610 to reserve your free space.

A **Community Asset List** has been put together to allow community groups, charities and town and parish councils to share their assets locally. If you have an asset you are willing to share with your neighbours, or are needing something which another local parish council or community group might already have and be willing to lend, please get in touch to find out more: alexa.davies@wiltshire.gov.uk, 01249 706610.

Priorities November 2016

1. Affordable access to cultural activities (73.26%)
2. Library use (58.14%)
3. Diversity and social inclusion (58.14%)





Royal Wootton Bassett and Cricklade Community Identified Priorities Newsletter. March 2018

Economy

RWB and Cricklade Community Area

What has been done so far:

1. The **Bassett Apprenticeships Fair** took place last year, providing information to local businesses and potential apprentices about apprenticeships. See previous newsletter for further details.

Priorities November 2016

1. Apprenticeship and work experience (71.43%)
2. Training and skills (70.24%)
3. Broadband and digital (52.38%)

The **Work Wiltshire** site is a fantastic resource with information about local apprenticeships and work experience in Wiltshire: <https://workwiltshire.co.uk/>

Apprenticeship opportunities at Wiltshire Council continue to be promoted via the Area Board social media channels. Follow @RWBandCCEM (community engagement manager) and @wilcolyneham (Chair of the Area Board) on Twitter or search for the Royal Wootton Bassett and Cricklade Area Board page on Facebook for regular updates.

2. **Learndirect** offer **FREE training and skills courses** to help people find work. If there is sufficient demand courses can be put on locally, for instance for **over 50s** developing digital skills to help them re-enter the workplace. Please find further information here: <http://www.learndirect.com/>. Laurie Wills is your local referrals coordinator for Learndirect: Laurie.Wills@learndirect.com.

Improving opportunities for ex-military personnel through training and skills is an area which John Stanwix from Support Empower Advocate Promote (SEAP) military advocacy is helping to address locally. John was at the November Area Board meeting and is interested in holding sessions in the RWB community hub and library once it is ready.

The Swindon & Wiltshire's **Women in Business Conference 2018** at Bowood Hotel was a smashing success on Thursday 8th March, as part of International Women's Day 2018 celebrations. Bringing together entrepreneurs and businesswomen from across the south west, this year's focus was on innovation and creativity and an opportunity for businesswomen to learn, reach out and connect.

3. With the weather as it is, thinking of booking a holiday online? Remember there is a great group of **WithIT** volunteers at the **RWB library on Mondays 10-11am** who are able to help you learn to use your ICT device completely for free. In Cricklade, the group of digi-champions meet in the **Cricklade leisure centre cafe on Mondays 10-12 noon** and are happy to help anyone keen to get to grips with their technology! Why not pop along to see if they can help you? Of course, if you are a whizz with technology, perhaps you could support others to learn? Drop in to find out more.

Women in Business Conference 2018





Royal Wootton Bassett and Cricklade Community Identified Priorities Newsletter. March 2018

Environment

RWB and Cricklade Community Area

What has been done so far:

1. Due to snow, unfortunately the Great British Spring Clean is being rearranged, with the majority of litter picks now scheduled for the weekend of **23rd, 24th and 25th March**. Please see individual town and parish council websites for updates and further information.

Priorities November 2016

1. Fly tipping and litter (74.12%)
2. Improving rights of way (42.35%)
3. Protecting the countryside (36.47%)

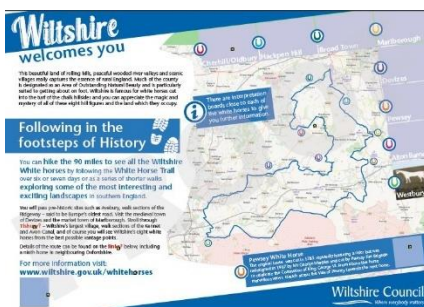
RWB&C is working with the **Wiltshire Wildlife Trust** to run a campaign to reduce litter across the community area and encourage people to reduce their waste and re-use materials where possible. On 8th February, Jess and her team ran a fascinating sell-out tour of the materials recycling facility at Compton Bassett. If you were unable to make this date but would like to attend a tour to learn more about recycling, a second tour is being arranged - please contact alexa.davies@wiltshire.gov.uk, 01249 706610 to express your interest (date to be confirmed).

2. Existing interpretation boards for Wiltshire’s White Horses will soon be replaced across the county, pending agreement by all the Area Boards with white horses in their community areas. The signs will be updated with QR codes with links to further information about the horses and the White Horse Trail (a walking route which links them together), audio and braille, to make the information available to more people and help encourage people to explore our beautiful county (hopefully alongside taking part in the Big Pledge campaign)! Please find a draft of a new sign below.

CATG continues to work on the priority to improve rights of way (see separate report).

3. Active community groups who have received community grant funding continue to make good progress improving rights of way, including the Purton Volunteers Footpath Group and Cricklade Dance Common.

The Bradenstoke parish will be taking part in the **WW1 tree planting legacy project**, thank you to the team here for your support in committing to planting and looking after the baby trees.





Royal Wootton Bassett and Cricklade Community Identified Priorities Newsletter. March 2018

Health, Wellbeing and Leisure

RWB and Cricklade Community Area

What has been done so far:

Priorities November 2016

1. Have you heard of Action for Happiness? How about Happy Cafes? Do you know a café where the norm is to support local people and help make them smile? Please see here to find out more and get in touch if you know a business which might like to become involved in the local area:

<http://www.actionforhappiness.org/happy-cafe>

1. Mental health (75.29%)
2. Healthy lifestyles (68.24%)
3. Support for carers (61.18%)

2. Would you be interested in getting involved with a therapy garden to help those in need, like the TWIGS Community Gardens in Swindon? Please contact your CEM if you would like to register your interest. Find out more about TWIGS here: <http://www.twigscommunitygardens.org.uk/>

2. A brand new **seated sports programme** is running in Royal Wootton Bassett.

The seated sports programme has been developed by Wiltshire Council's sports development team and the Royal Wootton Bassett and Cricklade Area Board. As part of the feedback from the joint strategic assessment process, local residents expressed that accessible sports provision for older residents was a key priority in the town.

The programme is an adapted sports offering for older people, people recovering from an illness or injury or perhaps those who wish to take the first steps towards a healthier lifestyle. All sports and activities take place from a sitting position, allowing participants to take part in a low intensity, highly enjoyable form of physical activity.

The weekly session will take place from 10am to 11am each Thursday at Royal Wootton Bassett Memorial Hall and is free of charge for participants, so please come and join us!

Cllr Allison Bucknell says "Taking part in a regular form of exercise is proven to be extremely beneficial to people of all ages. It is brilliant that we are able to offer something different to help those less able join in with sporting activities. Hopefully they will get the bug and soon be demanding all sorts of other exercise, and that we can have the fittest older population in Wiltshire!"

To register for the seated sports programme, or to request further information, please email SportsDevelopment@wiltshire.gov.uk or call Matthew Pearson, sports development officer, on 07827 982279.



Royal Wootton Bassett and Cricklade Community Identified Priorities Newsletter. March 2018

Older People

RWB and Cricklade Community Area

What has been done so far:

1. **Ellen Blacker** has been super busy helping local older and vulnerable people with their winter grants to help them keep well over the colder months. Applying for Surviving Winter grants has been very time consuming for Ellen, but successful clients receive £300 towards their winter fuel bills. Please find a case study from Ellen's work below, which makes for a lovely read:

Priorities November 2016

1. Social isolation and loneliness (80%)
2. Support for carers (57.65%)
3. Dementia (54.12%)

This lady has been known to me for a couple of years. She was a Social Worker but now suffers PTSD and is slowly gaining confidence again. Over the last couple of years, I have seen her grow from a really isolated person who wouldn't go outdoors and kept all of her doors locked (rather scary when she locked us in!). She still has a way to go, but now goes out walking her dogs and does gardening for one of her elderly neighbours. She effectively lost 5 years of her life whilst she was in hospital and has no memories of that time. Sadly, no one considered her home during this time and she racked up huge debts with the utility companies. Fiercely independent, she has scrimped and saved, becoming a bit of a hunter gatherer as she walks her dogs, and lives in a very cold house. She only heats her water once a week in order to shower, relying on cold water for the rest of the week. Her house is really cold! Because of this strategy, she is now mostly out of debt. The criteria for the Surviving Winter grant is that the household must be in Fuel Poverty, which she isn't as she has been paying off the debt. Thankfully, Wiltshire Community Foundation have a flexible approach and I was able to make a case for her to be accepted for the award and she was granted £300.

Her email quote:

"Thank Goodness for the keeping warm grant. Well needed with the snow over weekend! Thanks Ellen, me and the girls (dogs) would def been cold with that snowfall"

Me- It's a fab grant scheme. Donations are from those who receive the government pensioners winter grant automatically and don't need the money. About £70k in Wiltshire! They are the real heroes!

"Wow that is really amazing. I have sent the organisation a card to say thank you. It is lovely. I know I would have struggled in this weather. I keep being told to keep warm by my support workers. I apparently had double pneumonia and was hospitalised before so they were a bit concerned. So it is nice that when they come the house is warmer now, so they know I am taking better care of myself."

Brilliant scheme and so appreciated."

Ellen has also set up a Sunday Lunch Club at The Wiltshire for those who would otherwise be on their own on this day, please get in touch if this might help someone you know - 07557 922020, ellen.blacker@wiltshire.gov.uk.



Royal Wootton Bassett and Cricklade Community Identified Priorities Newsletter. March 2018

Transport

RWB and Cricklade Community Area

What has been done so far:

1. The **Community Area Transport Group** agrees funding for road safety improvements - currently there are 4/5 schemes that CATG can consider at any one time, please see the CATG report in the agenda pack for further information.

Priorities November 2016

1. Road improvement (81.18%)
2. Speeding and road safety (69.41%)
3. Access to public transport (65.88%)

3. The community area is lucky enough to have a **community MPV** which is available for community groups to use free of charge, subject to driver checks and registration. The vehicle is based at Lime Kiln in Royal Wootton Bassett and is already used by the local GP surgeries, Duke of Edinburgh Open Award Centre and the 3M's memory group in Lyneham. Please contact your Community Engagement Manager, alexa.davies@wiltshire.gov.uk, 01249 706610 if you would like to use this vehicle.



Bradies Connect timetables are now available from the Area Board section of the RWB library (at the back near the computers at present).

Stagecoach have upgraded their 55 Chippenham to Swindon buses and have re-introduced the 54 bus to West Swindon.

Purton Age Concern have now ordered their new minibus vehicle and paid a £5000 deposit, with help from the community grant scheme.

The new vehicle is with the conversion company being adapted for wheelchair users. The conversion company have informed us the vehicle should be complete by the beginning of April.



Logos for the signwriting company to put on the exterior of the vehicle to acknowledge the funders who have helped to finance this project are in progress and this will include the RWB and Cricklade Area Board!

The group will be organising a 'launch' day and hope the local press will be there to take photos and publicise the financial assistance we have received to purchase the new vehicle, watch out for these new wheels coming to Purton 😊



Royal Wootton Bassett and Cricklade Community Identified Priorities Newsletter. March 2018

Housing

RWB and Cricklade Community Area

What has been done so far:

1. During the regular Area Board catch up, the housing theme from the JSA has been identified as the theme which the Area Board could do more to address.

Given this, the March Area Board meeting has a housing theme. The meeting will take place on Wednesday 21st March at RWB Memorial Hall. GreenSquare will be presenting at the meeting about their local developments; work has commenced on a major GreenSquare redevelopment project bringing forward more affordable housing at Culverhay, Cricklade.

2. The Area Board is working closely with **GreenSquare** as the largest local housing association to help address the issues they face, for example in Cricklade the association have been linked to the digi-champions, for the digi-champions to offer support to GreenSquare residents. Funding has been also given to various GreenSquare projects, such as skate sessions for young people.
2. Commitment to the RWB&C **Child Poverty Action Plan** (as presented at the 20.07.16 Area Board meeting) is ongoing and the Area Board had a presence at this year's Child Poverty Summit to meet other local groups and organisations working to address this issue and learn more about what can be done to help.

In addition the Area Board continues to work in partnership with the Children's Centres and MOD Lyneham to help address issues relating to deprivation and poverty. The community hub in RWB is envisaged as a space for many more local projects and campaigns in 2018.

3. **Superfast Broadband continues to be rolled out across the county.**

Priorities November 2016

1. **Affordable housing (88.24%)**
2. **Deprivation and poverty (64.71%)**
3. **Digital engagement and broadband (48.24%)**



Royal Wootton Bassett and Cricklade Community Identified Priorities Newsletter. March 2018

LINKS TO USEFUL INFORMATION:

[WILTSHIRE INFORMATION NETWORK](#)

[WILTSHIRE JSA NETWORK](#) website

[ROYAL WOOTTON BASSETT & CRICKLADE AREA BOARD JSA report 2016-18](#)

RWB & C Project Bank – soon to be available on the revised ‘Our Community Matters’ website:

<http://rwbc.ourcommunitymatters.org.uk/>

For regular updates from the RWB&C Area Board ...

Follow us on Twitter - @RWBandCCEM

Facebook – Royal Wootton Bassett and Cricklade Area Board (Page)

AND sign up to *Our Community Matters* for your weekly *Royal Wootton Bassett and Cricklade local newsletter*: [here](#), we would love to hear from you.



Royal Wootton Bassett and Cricklade Investing in our Communities Newsletter March 2018

- Please note, all figures are subject to confirmation with our Finance team and as such must be treated as provisional.

	2017-18 allocation (£)	Invested to date (£)	Available for investment (£)	Amount leveraged (£)
GENERAL CAPITAL GRANTS	46,555	40,522	6,032.57	Leverage of 4.1
COMMUNITY AREA TRANSPORT GROUP (CATG)	46,535 (including contributions)	35,000	11,535	
YOUTH GRANTS	21,235	20,603.70	241.30	
HEALTH & WELLBEING / OLDER PERSON CHAMPION	7,700	7,700	Budget committed to appointment of Health & Wellbeing/ Older Person's Champion, Ellen Blacker	

NEW GRANT APPLICATIONS March 2018

GENERAL GRANTS	Amount requested	Total project amount
Allsorts Pre-School and Nursery - seeking £1,452.00 towards replacement of a perimeter fence. Please view full application here: Area Board Grant no 2621 http://services.wiltshire.gov.uk/areaboardgrants/grant_detail.php?gid=2621	1,452.00	2,904.00
St. Bartholomews Royal Wootton Bassett Church - seeking £4,500 towards a Croft kitchen refurbishment. Please view full application here: Area Board Grant no 2439 http://services.wiltshire.gov.uk/areaboardgrants/grant_detail.php?gid=2439	4,500.00	10,028.00



**Royal Wootton Bassett and Cricklade
Investing in our Communities Newsletter
March 2018**

<p>RWB TFC Vets - seeking £819.96 for four aluminium goals.</p> <p>Please view full application here: Area Board Grant no 2642 http://services.wiltshire.gov.uk/areaboardgrants/grant_detail.php?gid=2642</p>	819.96	819.96
---	---------------	---------------

COMMUNITY AREA TRANSPORT GROUP (CATG)	Amount requested	Total project amount
Please see separate CATG report.		



**Royal Wootton Bassett and Cricklade
Investing in our Communities Newsletter
March 2018**

GENERAL GRANTS/CLLR INITIATIVES UPDATE 2017-18

Meeting/Organisation	Amount awarded (£)	Total project amount (£)
January 2018		
Cricklade leisure centre - £945.00 towards a defibrillator to be sited outside the leisure centre	945.00	2692.00
Noremarsh Junior School - seeking £5,000.00 towards completion of an all weather running track to enhance provision of all pupils and to extend the facilities available to the community	5,000.00	21,045.00
Purton Parish Council £770.00 towards footpath improvement under the Paths Improvement Grant Scheme FP84	770.00	1,540.00
White Horse Trail councillor initiative (please see separate councillor initiative report)	250.00	250.00
November 2017		
Broad Town WI - £945.00 towards purchase and installation of a defibrillator on the outside of Broad Town Village Hall.	945.00	1995.00
Purton Parish Council - £4,612.50 towards ANPR and close circuit CCTV system at Purton Village Centre community facility.	4612.50	9225.00
Marston Meysey Village Hall Association - £5,000 towards replacement of the village hall roof.	5,000.00	24,300.00
Purton and District Age Concern - £5,000 for a new specialised minibus.	5,000.00	40,000
Wiltshire and Berkshire Canal Trust - £2,178.00 for finger posts and a mower for the Studley Grange site.	2,178.00	18,185.00
September 2017		
Purton Historical Society - £834.00 for a new Brockhurst Meadow information board.	834.00	834.00
July 2017		



**Royal Wootton Bassett and Cricklade
Investing in our Communities Newsletter
March 2018**

Cricklade Camera Club - new laptop and projector equipment for the club	987.00	987.00
Purton War Memorial and Village Centre Charity - a new pedestrian safety gate	807.00	1614.00
May 2017		
Dance Common Management Group - reinstatement of stone wall for Cricklade Bloomers	5,000.00	18,575.00
The Cricklade Festival - signage for Cricklade festival and similar events	1,000.00	350.00
Tockenham Village Fair - trestle tables	998.40	998.40
The Cricklade Band - new storage facility	992.03	992.03
Thames Pre-School - equipment to develop Forest School	350.00	350.00
Celebrating Age (Cllr initiative)	1,500	65,000

YOUTH GRANTS/COUNCILLOR INITIATIVES UPDATE 2017-18

November 2017	Amount awarded (£)	Total project amount (£)
Area Board initiative: £390.00 for 13 weeks Royal Wootton Bassett Memorial Hall hire @ £30 a session for new Seated Sports provision ().	390.00	390.00
May 2017		
GreenSquare - Cricklade Skate Scoot BMX session	1,050.00	1,600.00
Cricklade Youth Provision Proposal (CMAS) - to provide the structure and support for Cricklade youth provision from June 2017 to June 2018, for 46 weeks of the year.	10,750.00	10,750.00
H5 Adventure days for 200 young people – joint with RWB Mayor’s charity	3,000.00	6,000.00
Fun in the Sun - venue hire for rural sports programme in Purton	200.00	200.00



**Royal Wootton Bassett and Cricklade
Investing in our Communities Newsletter
March 2018**

Support for Healthy Schools	Tbc - as dependent on the number of schools taking part = £1,860	Tbc based on current take up 6 schools x £310 = £1,860, registration closes Oct 2017
Launch 2 Learning - extension of project to Cricklade and Purton	3743.70	3,743.70



Royal Wootton Bassett and Cricklade Investing in our Communities Newsletter March 2018

USEFUL LINKS

Area Boards have authority to approve grants under powers delegated to them. Under the Scheme of Delegation Area Boards must adhere to the [Area Board Grants Guidance](#)

The community grant funding criteria and application forms are available on Wiltshire Council's website: [here](#).

Further information about the Community Area Transport Group (CATG) and youth grants can be found by clicking on the following links:

[Community Area Transport Group](#)

[Youth Grants](#).

Paths Improvement Grant Scheme Application

Cricklade Town Council request the Area Board consider granting a Parish Improvement Grant to Cricklade Town Council to a maximum of £2,800.

Identified Footpath

Improvement of the footpath between The Forty and Pittsfield (CRICK 87) as a suitable project for the grant. The footpath is well used by residents to access the main footpath to the Schools and Town Centre.



Support

Both the Wiltshire Council Countryside Team and the Rights of Way Officer agree that this footpath meets the PIGS criteria and is a suitable project, with a recommendation that it is tarmaced.

Funding

So far one quote has been obtained which is for £5,575 excluding VAT.

Other quotes are being sought.

The Community and Leisure Committee would be prepared to fund 50% of this cost, based on quotation already received this would be up to £2,787.50.

The request to the Area Board is for match funding of up to £2,800, subject to other quotes being received.

Tina Jones
January 2018



North Wiltshire Youth Provision – CMAS proposal

5th March 2018

Dear Alexa

Please find enclosed Community Mentoring and Support CiC's (CMAS) draft proposal to deliver youth services in the Royal Wootton Bassett and Cricklade area. I hope that all the information you require is contained within the document but if you do want any more information from us please do not hesitate to contact me at the email or telephone number below. **Section 2 is the bit that talks about what we propose to do so maybe that is the most important bit (but feel to read the rest of the other generic information).**

We are a young social enterprise that makes no profit but aims to provide quality support for young people, wherever that may be. Please come back to us with suggestions, ideas and revisions to this document so we can design the right provision for young people in the area

Yours sincerely

Ben Evans
Managing Director

1. Introduction

Community Mentoring and Support CiC (CMAS) is a Social Enterprise registered with Companies House as a Community Interest Company. The Company was founded in October 2013 to meet the following aims:

- a) To provide commissioned professional mentoring for young people who have additional needs
- b) To provide youth services to commissioning bodies such as town, parish and district councils
- c) To provide educational mentoring for young people who are not achieving in schools

We are delighted to make a proposal for providing services for young people in RWB&C under the second strand of our work.

2. Our proposal

CMAS proposes that we provide the following work in North Wiltshire:

- To run a youth club in Royal Wootton Bassett, once a week for 46 weeks of the year (for 6 months)
- To run a youth club in Lyneham, once a week for 46 weeks of the year (for 6 months)
- To run a youth club in Cricklade, once a week, for 46 weeks of the year (for 6 months)
- **Input and support from Ben Evans Managing director. The managing Director is responsible for:**
 - Assisting with identifying and applying for additional funding
 - Providing insurance; safeguarding and Health and Safety; payroll services; and DBS certificates for any new volunteers or member of staff
 - Communicating with the Town Councils as and when required or is appropriate.
- **Provision of a qualified and experienced line manager to all staff including volunteers. The line manager is responsible for:**
 - Support and identify training for staff and volunteers
 - Offer supervision and support for staff and volunteers
 - Monitoring quality assurance through evaluation and planning records
 - Meet once every half term to facilitate a team meeting to ensure everyone is happy and having their needs met, as well as those of the young people who attend the centre
 - Co-ordinate volunteers and partners
 - Communicate with hall administrators to ensure smooth running of our hiring the space
- **Qualified and experienced youth workers to delivery front line services at a contract of 6 hours per week. The lead youth worker is responsible for:**
 - Opening up the youth club/project
 - Plan, record and evaluate sessions in line with good practice and quality assurance
 - Buy relevant materials and tuck shop supplies and plan stimulating and educational activities
 - Plan themes for terms and off-site trips when and where possible
 - Model good practice in working face to face with young people during the session
 - Lock up the building at the end of each session
 - Leave the halls clean and tidy in good order for the next group to use.

The cost for this service would be £17,767.50 for the year, or £,8,883.75 for 6 months), plus costs to hire appropriate venues as needed. This cost is the same cost as this year, per session, plus 3% to cover increase in cost of staffing.

Community Mentoring and Support CiC

The GCafe @ The Ron Smith Pavilion, Springbank Way, Cheltenham, GL51 0LH

Email: admin@gloucestershiremas.co.uk | Phone: 01242 224 509 | Company Number: 8735439

1. Why choose CMAS?

Quite simply because we deliver a better service than any other body currently operating in the local area in the youth work field! You are welcome to take references from any of the current committees who commission us, especially around issues such as quality of provision; reporting; “added-value” such as fund raising and support to the committee; and most importantly the change in culture of the youth clubs we have taken on following on from other providers. We are not a perfect organisation and try to learn from all the projects we run and mistakes we make, but moreover we try and learn from the mistake other organisations make. This means we can often pre-empt mistakes and the following are what set CMAS apart from other organisations that may tender:

- We take time to understand the individual needs of committees and commissioners. We communicate with them regularly, listen and lead in equal measure, and foster positive relationships with them
- We employ good staff. This is a major area of learning since the County Councils’ withdrawal from Youth Clubs in 2011 and how other organisations have tried to respond to it. We have a mixture of qualified staff; adult volunteers; young leaders; and staff who we “talent-spot” and employ before they are qualified. The new staff often have transferable skills – such as being teaching assistants or community leaders – and we support them to become youth workers. We don’t rely on trainees or apprentices as, although we welcome people to train with us as part of their development, the model of relying on them can lead to poor quality provision
- We are excellent in facilitating partnerships and raising additional income. We would love to work with partners such as the Door and/or others for the well-being of young people locally

2. Health, Safety and Safeguarding

Promoting the health, safety and wellbeing of young people is a key priority for CMAS. We take the following steps to ensure that we do our duty – and beyond – to ensure young people’s wellbeing is at the heart of what we do:

- Safe recruitment – we follow a safe recruitment policy which includes taking references on our staff (for this purpose “staff” includes volunteers); running DBS (previously CRB) checks on all staff; having regular supervision available for all staff; and doing direct visits to observe their practice
- Safeguarding Policy – we follow a Safeguarding Policy modelled on Gloucestershire Safeguarding Board’s example. Ben Evans is our Designated Safeguarding Officer. His experience in this area includes 15 years managing youth clubs and youth work settings; and three years managing risk with young people at high risk of harm as part of Gloucestershire’s Youth Offending Service

Community Mentoring and Support CiC

The GCafe @ The Ron Smith Pavilion, Springbank Way, Cheltenham, GL51 0LH

Email: admin@gloucestershiremas.co.uk | Phone: 01242 224 509 | Company Number: 8735439

- Health and Safety Policy – we follow a simple health and safety policy and risk assess as the work we do. Our risk assessments follow a common sense approach and we embrace risk as a necessary part of adolescents growing up into rounded adults
- Staff training – we induct all our staff into the organisation. We encourage staff to train in safeguarding and have termly meetings where we discuss safeguarding matters and reinforce safeguarding good practice
- Partnerships – CMAS are well established with partners who across the county including County Council’s Targeted Support, Families First and Children and Families teams.

3. Practical Arrangements

- ✓ CMAS is insured by Merkel Insurance for Employers Liability (£10,000,000) and Public Liability (£5,000,000)
- ✓ CMAS is governed by constitution and managed by three Directors: Matt Tope, Craig Davey and Ben Evans
- ✓ CMAS is constituted as a “Community Interest Company”. This means that we are non-profit making. CMAS is run as a business in order to make a surplus which is directed to our social aim: “...to be able to provide a mentor to any young person with additional needs in Gloucestershire within five years”.
- ✓ CMAS banks with Unity Trust Bank. We require two signatories on all payments which is approved by major funders such as the National Lottery

4. Contacts for projects we currently run (who will act as referees)

- Allan Knight, Chair of Brizen Young People’s Committee: ak005t6506@blueyonder.co.uk
- Roy Winrow, Chair of Northway Youth Club: roywinrow@tiscali.co.uk
- Alun White, Chair of Stow Youth Club: alunwhite@gmail.com



Cricklade, Purton and Royal Wootton Bassett Community Policing Team Update



Hello and welcome to this Community Policing Team report.

The purpose of these reports is to provide a short summary of the local issues in your area. Engaging with the public is vital for us as. Not only does it give us an opportunity to share what we are doing and keep our communities informed and up to date but it also provides an opportunity for our communities to feed back to us; what we're doing well, where we can make improvements and how we can work together to tackle local issues.

We hope you find these updates useful, for the latest news, crime prevention advice and appeals please follow us on:

Twitter <https://twitter.com/wiltshirepolice>

Facebook <https://www.facebook.com/wiltshirepolice/>

Or sign up to Community Messaging <https://www.wiltsmessaging.co.uk/>

Thank you for your continued support to Wiltshire Police.

Crimes that have an impact on the community reported between 1st January 2018 and 3rd March 2018

- ◇ Between the 5th January and the 8th January unknown Suspect(s) have climbed a 6ft fence and broken the locks to a premises on the High street, Cricklade and stolen various items from within.
- ◇ Between the 13th and 14th January unknown Suspect(s) have gained access to a stable at Greenhill Lane and stolen tools to the value of £4000.
- ◇ Between 22:00 on 19th January and 08:00 on 20th January unknown Suspect(s) have entered a secure garage at Pavenhill, Purton and stolen Chainsaws to the value of £15,000.
- ◇ Between 20:00 on the 19th January and 09:00 on the 20th January unknown Suspect(s) have broken in to a shed at an address on Collins Lane, Purton and stolen various tools from inside.
- ◇ Between 16:00 on the 21st January and 09:30 on 22nd January unknown Suspect(s) have entered a container on Wood Lane, Braydon and stolen a number of tools and chainsaws from within.
- ◇ Between 16:00 on the 26th January and 11:00 on the 28th January unknown Suspect(s) have forced entry to a storage shed at a Farm in Broadtown and stolen a Quad Bike and a petrol chain saw.
- ◇ At 21:00 on the 28th January a robbery occurred at the Esso Garage in Wootton Bassett, the suspect threatened the victim with a hammer and stole £100 from the till.
- ◇ On 29th January between 17:20 and 17:30 unknown Suspects have forced entry to a property on Linden Way, Swindon by smashing the rear patio window and stolen a safe containing £400.
- ◇ On the 29th January between 20:00 and 21:40 unknown Suspects have forced entry to a property on Byron Avenue, Royal Wootton Bassett by smashing the rear window although no property was taken.
- ◇ Between 17:30 on the 29th January and 09:00 on the 30th January unknown Suspect(s) forced entry to a property on Longleaze, Royal Wootton Bassett and have stolen a number of tools.
- ◇ Between 16:00 on 29th January and 13:30 on 30th January unknown suspects have forced entry to a property in Gainsborough Avenue and stolen a number of items from within.
- ◇ Between 9th and 16th February unknown suspects have forced entry in to a shed at an address at The Street, Brinkworth although nothing was stolen.
- ◇ Between 16:00 on the 14th February and 07:00 on the 15th February unknown suspect(s) have forced entry to a building site in Purton and stolen the door to a digger.
- ◇ Between 19:15 on the 14th February and 07:15 on the 15th February unknown suspect(s) have forced entry to a shed at an address in St Peters Church, Clyffe Pypard and stolen a number of items including a bathroom suite and bicycles.
- ◇ Between 17:00 on the 14th February and 09:00 on the 15th February unknown suspect(s) have forced entry to a garage at an address on Wood Street, Clyffe Pypard and stolen a strimmer and a hedge trimmer.
- ◇ Between the 15th and 16th February unknown suspect(s) have entered a number of commercial properties in the high street, Cricklade and stolen various items include cash and charity boxes.
- ◇ At approximately 01:00 on the 17th February unknown suspect(s) have forced entry to a commercial property on Church end, Purton however nothing was stolen.

CONTROL STRATEGY

Below is our control strategy for your reference. This focuses on where how we conduct our operational Policing based on the Police & Crime Plan. We will continue to align our resources with the threat/harm/risks presented in line with the control strategy.

Domestic abuse, Cyber Crime, Organised criminality, County lines and the criminally exploited, Dangerous and persistent offenders, Child sexual exploitation and abuse, Modern slavery and human exploitation.



Volunteers Wanted

Our volunteers help us do more by increasing our numbers and creating closer and more effective relationships with our communities. We are currently recruiting Police Vehicle Cleaning and Inventory volunteers to work across the Force within our Community Policing Teams.

For an application form and volunteer role description please visit the Wiltshire Police Website and you will find a volunteers section under the support Tab.



Thank You

Thursday the 1st March saw some of the worst weather conditions Wiltshire has seen in a number of years which continued in to the weekend. Whilst officers worked tirelessly to keep up with the policing demand a number of other agencies and members of the public also assisted, this a thank you to all those that helped during this period.





The link below is for Community Messaging. The Community Coordinator for this area sends out a daily message, if there has been any crime that will benefit the community to be aware of. This includes thefts, scams and burglaries, the aim is to inform you of what is happening in your area, help you take any actions to avoid becoming a victim of crime and to alert you as a potential witness to any crime. Its easy to sign up and only messages, relevant to your area, are sent to your email inbox.

<https://www.wiltsmessaging.co.uk/>

The email address for the Wiltshire North Community Policing team is
northwiltshirecpt@wiltshire.police.uk
Please phone 101, or 999 in an emergency to report any incidents or
crimes

This report has been prepared by PC 2608 Stuart Welch



Royal Wootton Bassett and Cricklade Area Board – Report for 21st March 2018

Community Engagement

Our campaign to highlight the problem caused by the parking of vehicles that may impede or delay Emergency Services from getting to their destination and allows us to educate the drivers / owners is still on going. We continue to have some issues when the school runs occur and we would ask those collecting children to take a couple more seconds before getting out of the car and to think ‘where I am parked can an emergency vehicle get through?’ If not then please move the car to a different location.

Where possible we are working with our Partners to reduce the amount of parking issues and are using leaflets and the appliances as an educational tool so don’t be alarmed if you see an appliance driving about the local roads and estates.

At RWB the ‘Men’s Shed’ are still meeting on a weekly basis and have they been doing some great work in keeping their small team very active. They have had a number of guest visitors who have given them some insight into the work that they do and what they can offer the team. Men’s Shed is something that the Fire Service fully support and currently we are in the early discussion phase of seeing if we can expand something similar to this in Cricklade.

We continue to offer our Safe & Well visits and if you (or someone you know) needs a smoke alarm, some advice or are worried about what you would do in an emergency, contact us at; <http://www.dwfire.org.uk/safety/safe-and-well-visits/>

Response

Total Fire Calls for Cricklade Fire station; 25/01/2018 – 05/03/2018

Category	Callsign	Total Incidents
False Alarm	52P1	0
Fire	52P1	0
Other	52P1	13
Special Service	52P1	6
Total	52P1	19

Other – This can be a movement to another fire station to provide fire cover during an ongoing incident or as an appliance that is part of an incident on another fire stations area.

Availability of On-Call appliance 52P1 Cricklade;

Appliance	Day (06:00 - 18:00)	Night (18:00 - 06:00)	Total
52P1	54.96%	91.52%	73.24%

The reduced figures during the day are attributed to course attendance as part of a Firefighters requirement to maintain competence.

Total Fire Calls for RWB Fire station; 25/01/2018 – 05/03/2018

Category	Callsign	Total Incidents
False Alarm	56P1	5
Fire	56P1	3
Other	56P1	3
Special Service	56P1	9
Total	56P1	20

Other – This can be a movement to another fire station to provide fire cover during an ongoing incident or as an appliance that is part of an incident on another fire stations area.

The Water carrier also attended 2 incidents during this period

Availability of On-Call appliance 56P1 RWB;

Appliance	Day (06:00 - 18:00)	Night (18:00 - 06:00)	Total
56P1	67.06%	94.94%	81%

The reduced figures during the day are attributed to course attendance as part of a Firefighters requirement to maintain competence.

On-Call Recruitment

As the Availability tables show, crewing of appliances during the day falls below our ideal expectations of 100%. We continue to strive and improve on the number of personnel at each station through our recruitment process so as we can increase the amount of hours our appliances are available for call outs. Details of how to join our team are available on our website www.dwfire.org.uk or you can contact us on our hotline 07122 691444

Recent Notable Incidents

There been no incidents of a notable nature for either station in their own areas but they have supported stations around the county for any incidents that attract a large attendance or are part of an increase in resources. However, we have seen an increase in the number



of chimney fires attended by the fire Service and we recommend on cleaning a chimney at least twice a year. At a minimum it is recommended before it is used and again after it has been used. If you burn large quantities of wood we recommend that you also have a chimney swept at least once more during the winter period.

Community Safety Plan

Our Community Safety Plan is our vision until 2020 and can be found on the DWFRS website; <http://www.dwfire.org.uk/community-safety-plan/>

Matty Maggs

Station Manager Westlea, Cricklade and RWB

Email: Matthew.maggs@dwfire.org.uk

Tel: 01722 691173 | Mobile: 07595 966708



Royal Wootton Bassett – Jan-Feb 2018

TWO MONTHS SESSIONS:

08/01/18 – 26 young people

15/01/18 – 33 yp

22/01/18 – 42 yp

29/01/18 – 36 yp

05/02/18 – 28 yp

12/02/18 – 34 yp

19/02/18 – 35 yp

26/02/18 – 33 yp

SUMMARY:

Bassett sessions continue to be busy with numbers still growing. Working with over 30 young people in a session is really good news, but also a challenge for staff!

Many of the young people have ongoing everyday mental health issues, most mild some more serious. A number of these young people are having support from either CAAMHS or school counselling. Youth workers are also committed to offering support whenever possible.

The young people over the last few months have made full use of the media speaker, organising on one occasion a session based around music that reminded them of growing up and parents' favourites. This was great fun and quite insightful. We have done some simple cooking and some young people are now bringing in their own food to heat up/cook for their supper, which workers supervise when required as its good to see the young people becoming self-sufficient.

Some young people are still using cannabis and alcohol, however this has definitely been less apparent in the last two months. Issue based sessions over the past couple of months have included sexual health and relationships around Valentine's Day, safe social media, alcohol awareness plus we made over 60 pancakes for Shrove Tuesday.

We have facilitated some ethical dilemma activities which bought up discussions around LGBTQ issues. Cooking was focused on healthy eating in January which also made for conversations about the cost of food.

ISSUES FACED:

Throughout the sessions there has always been group discussions around mental health, but when possible one to one conversations. So, in March and April we will be focusing on mental health integrated with drug use, mindfulness and healthy lifestyles. The room is still a concern as we have to be super careful not to leave anything out of place, and getting the young people to leave on time can be challenging, only for the fact that they would happily stay longer.

PARTNERSHIP WORK/LYN MEETING:

Some young people attended the LYN meeting and shared their opinions on Bassett provision for young people. There were discussions regarding ideas for a youth café which the young people were really enthusiastic about. One young person has committed to see this project through. Some of these young people struggle to commit to school or college so to attend this kind of meeting and share opinions is quite an achievement.

CMAS also hosted a couple of local councillors (early in March) to look at examples of youth and community cafes and spaces and what can be achieved with community support. I hope Sue and Mary will feed back on this soon. (Ben)

DEVELOPMENT OF THE YOUTH CLUBS:

The model of commissioning youth activities in the Area Board is a positive one in that it gives stakeholders an opportunity to respond to community need, and in the cases where LYN's operate an opportunity for young people to feed in to this directly.

However – in terms of providing continuity of staff and sessions, that we know young people respond to best – they can cause difficulties for an organisation like ours. We keep costs low by keeping overheads low, and this means we do not have a “bank” of staff to call on. Rather – we employ specific staff for specific pieces of work. This means that being notified early of start and finish dates is key to our financial planning, to say nothing of planning the work with young people so it is coherent and starts/ends well. At the time of writing we are unsure of whether we will continue in as little as 3 weeks time! – this is very tricky to manage although we understand how we have got to this point.

If officers/members could consider this for review it would help small organisations like ours no end



Cricklade Youth Project Report – Jan-Feb 2018

SUMMARY:

It would seem as if our period of outdoor, detached youth work has paid dividends! In terms of number of attendees, that is, which of course is only the beginning of the work...We have had 19 and 17 young people attend in the first two weeks after hours of tireless work on the streets by staff; and at first glance they are the “right” groups.

We have had a group of younger young people attending the session which has been really positive, they want to engage with the youth workers playing issue-based games, for example safe use of social media, healthy friendships, sexual health. We also have a group of older ones, but when they arrive the younger ones seem to feel intimidated and have left early. In the near future the team has a decision to make regarding the older ones, some of whom will turn 18 this year so may move on organically. But we don't want to lose the engagement with the younger members as we have the opportunity to establish trusting relationships to move forward with the young people encouraging positive choices in their lives. It's a typical youth work dilemma, as the older group are the most “in need” in terms of behaviour and lifestyle choices.

The room comes with its drawbacks in that it's not geared up for young people with gas bottles, hazardous cleaning materials about etc, but at least it is warm and dry. Sharing space often comes with drawbacks but we hope to manage this successfully.

The older group that attend are frequently under the influence of cannabis or alcohol, mainly the males during sessions. There have also been conversations around class A party drugs being used at the weekend.,

But we are now having regular young people in which is really a positive start to building positive relationships with them!

Two months sessions:

January attendance was infrequent whilst doing detached in winter weather

Centre based:

19th Feb: 19 young people

26th Feb: 17 young people

ISSUES FACED:

Establishing the group: time will tell how this progresses. Facilitating the sessions safely. Getting young people to invest in the session and have input into what they would choose to do.



Lyneham – Jan- Feb 2018

TWO MONTHS SESSIONS:

05/01/18 – 8 young people

12/01/18 – 11 yp

19/01/18 – 11 yp

26/01/18 – 11 yp

02/02/18 – 11 yp

09/02/18 – 10 yp

16/02/18 – 9 yp

23/02/18 – 13 yp

SUMMARY:

The sessions have been quieter in Lyneham, caused mainly by lots of changes in friendship groups. Over the last two months the sessions have been mirroring RWB with regard to planned sessions, focussing on sexual health and safe social media.

We had a small celebration for a young person who had spent two years with CAAMHS (Child and Adolescent Mental Health Service) and has been signed off. The young people are aware of her CAAMHS involvement and she was happy to share her experience.

We have been planning to move to the community centre, some of the young people have expressed some apprehension but this is to do with change. Our first session in the new setting was a success. There are lots of different facilities such as pool, a computer console and a chill out area, so it's really positive we can use the space. It's like all youth centres used to be a little while back!

There were a couple of young people engaging in table tennis, where as previous they rarely partake in any physical activity, so it was nice to see a change resulting from the move immediately. Its so beneficial to have a purpose built space for young people, it allows youth workers to spend their time engaging in more depth with attendees rather than policing and worrying about buildings!

ISSUES FACED:

As ever the number of young people attending the session can vary greatly, often due to the logistical nature of military lifestyle. Although the young people seem to cope well in general with all the moves they might face, we do support those who have built strong relationships and find moving more emotional.

Update for Royal Wootton Bassett & Cricklade Area Board

Update from	Cricklade Town Council
Date of Area Board Meeting	21 March 2018

Headlines/Key Issues

- **Cricklade Neighbourhood Referendum**

On 8th March 2018, Cricklade held its Neighbourhood Plan Referendum, this was the final stage in a long process by a group of dedicated volunteers made up of Councillors and residents to create a framework for Cricklade's future development. The Plan was divided into four main policy areas which through extensive public consultation were considered to be the most important to residents, these were:

- Settlement and Housing Objectives
- Traffic and Transport Objectives
- Business Objectives
- Look and Feel Objectives

Cricklade Town Council made every effort to make sure all residents were aware of the referendum by: extensive coverage on a dedicated Website, social media, leafleting all properties, posters and press releases. The result of this was a healthy 26% turnout (higher than the local average) of residents who voted to the question "**Do you want Wiltshire Council to use the neighbourhood plan for Cricklade to help it decide planning applications in the neighbourhood area**"?

The final votes cast were as follows:

Yes: 811	No: 47	= 94.5% yes vote
-----------------	---------------	-------------------------

- **Annual Town Meeting will be held on Tuesday 17th April - 7pm at the Town Hall
Refreshments served from 6.30pm**

The Annual Town Meeting, is not a council meeting, it is an opportunity to meet and hear from Councillors, Community Groups and Individuals on matters that are of local importance. It is an opportunity for residents to hear from Councillors, who will give presentations on the Council's activities and to let you know a bit about what is planned for the next 12 months.

- **Fritillary Watch during April**

If you have never seen the Cricklade Snake's Head Fritillaries on full display in Cricklade's North Meadow, don't miss the opportunity this year.

North Meadow has a great variety of wildflowers and is of international importance as one of the finest examples of lowland hay meadow in Europe. It is protected as a Special Area of Conservation (SAC) and a Site of Special Scientific Interest (SSSI).

The meadow has over 80% of the British population of Snake's Head Fritillaries growing here. Visit our website to keep up to date with news of the fritillaries via the 'Fritillary Watch' link and find details of the Court Leet Guided Walks.

- Please visit the Cricklade Town Council website for further details on these events, and others taking place over the next weeks

Music in State Schools in the RWB area

Over the years, one or other local music teacher has tried to form a children's choir in Bassett. Lisa Williams is the latest. After all kinds of attempts to recruit more children through schools and in the community, her Cantantini remains small. A discussion with members of the adult choir Cantini concluded that sport, dance, scouts, guides etc (which of course are all run by volunteers) seem to be preferred by parents rather than music and drama. WBlets draws from a wider area than Bassett. Both St.Bart's and the Methodist Church have small junior "choirs". Anna Friend with Quirky Bird has drama groups at the Methodist Church and at Wroughton. The RWB Orchestra and Bassett Brass try hard to attract youngsters.

It is obvious that, over the years, there has been little carry over into the community from music done in Schools, except where there is support from parents who pay for private lessons and membership of organisations like Young Musicians, choirs like the Janice Thompson Performance Trust, bands like Brunel Brass etc.

The local Primary Schools are large and full to capacity. A case has been made for a new Primary School in Bassett but no suitable land has yet been found. RWB Academy is huge. So staff and resources are stretched.

It is clear that Schools they give as much time and resource to music and performance as is required by the national curriculum and cannot do much more. The Heads and staff are aware of the Festival and how we are trying to create opportunities from beginners onwards but they cannot commit long-term to support of RWBAF. Even the logistics of attending an event are a problem because of Safeguarding. Whether or not the Adjudicator gives a mark and constructive remarks (maybe disappointing some) and awards a trophy has become irrelevant.

The smaller state schools that do support RWBAF, from outside the immediate area, seem to be able to do a bit extra with the support of numerous parents. The imminent Swindon Music Festival has exactly the same experience in spite of close ties to all the schools.

The North Wilts Music Cluster of teachers and others meets at 4.00pm Thursday 15th March at St.Mary's School, Purton. Wiltshire's Music Connect and the Music Centre at Bradford-on-Avon are useful resources, if teachers and others have time and funds to take advantage of them.

The cultural gap between what schools can do and what the community can do is widening. What, if anything can be done ?

John Davies for RWBAF 8th March 2018

Royal Wootton Bassett Local Youth Network

for and with our young people

January – March 2018

For the Royal Wootton Bassett Local Youth Network(RWBLYN), it has been a busy, but productive time bringing together work that:

1. Put in place necessary infrastructure, such as the committee, stakeholders, young people and polices.
2. Started work on understanding the needs of young people in Royal Wootton Bassett.

The Committee held its first meeting on January 10th, followed by a Management Committee Meeting on 12th February and a second Stakeholder meeting on 26th February. All of which received good attendance of Committee, Stakeholders and most importantly our Young People.

A committee is now in place as follows and is working hard to move things forward:

- Chair - Cllr Sue Hughes
- Vice Chair – Kevin Magner
- Treasurer - Cllr Nic Hughes
- Temp Secretary – Cathy Emms
- Safeguarding Champion - Denise Channing
- Equality & Inclusion Champion - Deb Skilton
- Quality Assurance Champion – Matt Saxon
- Data Controller - Cllr Sue Hughes

As our Young People gain in confidence we would like to see appointments to the Management Committee, amongst them.

The Committee is developing its understanding of the needs of our young people, in order to shape future provision. This is being achieved via the following means including:

- Desk based research - conducted and presented to committee.
- Verbatim comments gathered – ongoing.
- Survey to be conducted – research requirements now in first stage of review.

The Chair and Town Councillors have also sought to develop greater understanding from others and have attended the following:

- LYNMG Meeting – which brought some helpful learnings from LYNs across Wiltshire.
- Youth Cafes visits in Gloucester – 3 sites supported by Ben Evans (CMAS).
- CME Colour training – understanding of preferences for working. This could be used to support the Management Committee and Young People.

The Management Committee, would like to thank Wiltshire County Council, Royal Wootton Bassett Town Council, all the stakeholders, young people and CMAS for their very much valued support to date.

COMMUNITY AREA TRANSPORT GROUP ACTION / NOTES LOG

	Item	Update	Actions and recommendations	Who
	Royal Wootton Bassett and Cricklade CATG – Date of meeting: Wednesday 7th March 2018. Cricklade Town Council officers			
1.	Attendees and apologies			
	<p><u>Present:</u> Simon Billis, Mollie Groom, Mary Champion, Mike Farrow, Jonathon Bourne. Allison Bucknell, Bob Jones, Dean Cobb, Rod Gill, Jacqui Lay, John Coole, Ray Thomas, Diana Kirby, Chris Hurst Martin Cook, Steve Hind</p>	<p><u>Apologies:</u> Alexa Davies Geoff Jackson-Haines Spencer Drinkwater</p>	<p>Not Present:</p>	
2.	Notes of last meeting - December 2017			
		The notes from December meeting were accepted		
3.	Top 5 Priority Schemes (A List)			
a)	<p><u>Issue 3986 - CRICKLADE</u> The Forty/The Fiddle/ Chelworth Rd. HGV damage</p>	<p>Signing scheme proposed is approved by Cricklade Town Council costing up to 5k. CTC agreed 50%</p> <p>Signs ordered and implementation programmed to be complete by 22nd Dec, although this is now likely to be delayed until Jan/Feb.</p> <p>Costs now likely to be around 8k due to additional works including bollards. WC to fund the additional costs.</p>	<p>Completed - £2,500 to be paid by Cricklade – remainder to be paid by WC - SH to send invoice to Cricklade TC – now can be removed from the A List as a closed case.</p>	CLOSE
b)	<p><u>Issue 3629 - CRICKLADE</u> Cricklade, Chelworth Rd - speeding</p>	<p>A proposal received from Cricklade TC, 40mph on the built up area for the western end of Chelworth Rd. This proposal is approved. Cost around 2.5k for advert and implementation.</p> <p>50% funding from Cricklade TC agreed 28/12/17</p>	<p>SH - Cricklade TC confirmed to go ahead with the 40mph extended back from the crossroads up Chelworth Road. WC to advertise the proposals for a new speed. If no objection then can go ahead. If any</p>	SH

COMMUNITY AREA TRANSPORT GROUP ACTION / NOTES LOG

		Site visit undertaken to determine sign locations. To be advertised.	objections then have to address them.	
c)	Issue 4490 - PURTON Submitted 17/02/16 Road calming required on Station Road in Purton	Scheme discussed at the PC meeting in January. Estimate approx. £14k. Ray Thomas confirmed Purton PC had budgeted to contribute £7k to the project. Purton PC to decide whether or not to continue.	Two schemes – 4490 and 4458. 4490 leave open and move to B List.	MOVE TO B LIST
d)	Issue 4458 – PURTON – Cricklade Rd Submitted 02/02/16 Speeding Issue.Speed of traffic entering and leaving Purton at Widham by railway bridge.	Discussed with Ray Thomas Futher consultation required from Purton PC	Meeting with SH and RT – request for a cost development for the scheme – Purton PC to put forward £7k – probably a substantive project as could be around £20k. if so then the cost would not come from CAT G budget. CAT G requesting for the costings and then make a decision in June.	SH
e)	Issue 5026 - BRADENSTOKE Submitted 29/11/16 Safety at B4069 junction Bradenstoke	Initial proposal presented to PC at previous CATG meeting for consideration. Further request for chevron signs to be included on approach to No 7 The Banks – Site meeting undertaken to clarify request. Drawing proposals being prepared.	SH and AB met on site to look at extra chevron signs around No. 9 The Banks. Scheme with extra chevron boards and signage – paper copies given to RG - Lyneham and Bradonstoke PC agreed £2,000 to put towards it. Cost of project around £8,400. Action SH to email pdf of scheme. Rod to try to achieve an extra £500 to £1k from the pc next Tuesday at pc meeting. If confirmation comes through from pc and happy with the scheme then SH can proceed.	PC to discuss further funding. SH to proceed subject to additional funding

COMMUNITY AREA TRANSPORT GROUP ACTION / NOTES LOG

f)	Issue 5892 - TOCKENHAM A3102 Tockenham	Site meeting undertaken with PC. Various concerns raised. It was agreed to develop several proposals with cost estimates to address these concerns, followed by prioritisation in conjunction with the PC.	SH and MC met with DK and other parish councillors. Feel there is something to be done but needs to develop a series of small projects to be priced up and then CAT G can decide how to go ahead. SH to let pc know when he has some schemes ready. Hopefully will having something ready for next meeting.	SH
g)	Issue 5083 - PURTON Submitted 10/1/2017 Road priorities at Tadpole Lane, B4533 and the C70	Site visit undertaken. Low cost option not available. All options will require significant land acquisition.	SH visited and feels there is no low cost option available. BJ reported several accidents again at the junction. SH and MC feels that an experimental one way order – no entry into Hayes Knoll or no entry either way. Both Purton Pc and Cricklade TC to be advised and for them to come back to say if they agree.	SH TO WRITE TO CTC / PURTON PC
4.	Substitute Priorities (B List)			
a)	Issue 4412 - CRICKLADE Traffic management/ speeding/ parking at North Wall, High Street Junction, Cricklade.	07.12.17 - This looked to be progressed through routine management. This is likely to be dealt with by the next meeting. A review of waiting restrictions is taking place in Cricklade by Trevor Malton (WC network management team). Town council to progress approval for new parking area off North Wall.	<i>No action.</i> <i>Leave on until Feb meeting with a view to closing at that meeting.</i> RTO now in for double yellow lines/ waiting restrictions waiting for these to be confirmed - no further action on car parking as TC dealing with this.	CLOSE

COMMUNITY AREA TRANSPORT GROUP ACTION / NOTES LOG

		Waiting restrictions can be developed once approval process for parking area is complete.	Can now be closed	
b)	<p>Issue 4567 – BROAD TOWN</p> <p><i>Submitted 29/03/16</i></p> <p>Speeding Broad Town</p>	<p>07.12.17 - Dave Thomas had attempted to contact the PC to discuss this issue, however they had not got back to him. To be left on agenda for one next cycle.</p> <p>Broad Town PC considering SIDS.</p> <p>SH had provided SID information to Broad Town PC. SH stated fixed SIDS were not effective, portable SIDS are preferred. WC policy is not to install permanently installed SIDS based on research. It was advised Broad Town identify a number of locations in each direction for potential SIDS and to move them about. This would need to be managed by the PC, so qualified manpower was required for a successful scheme. Posts could be put in place for SIDS to be fixed to.</p> <p>DT has tried to contact Broad Town PC and has not received a response.</p>	<p>SB – considering the SIDS at pc but these are not always effective but speed limit reminder signs may be a better option. Can be Solar Powdered. Would need two signs on posts – Parish Steward can put up and pc could pay for these. Other option put in marked parking bays to creating ‘mobile build outs’ . Looking at the Safe Routes to School policy as then can apply for other funding. Discussing this with DT and when BT pc have some schemes they are happy with then will come back to CAT G to look for financial support.</p> <p>Action is for BT to bring back a proposal to CAT G at the next meeting.</p>	BROAD TOWN PC
5.	Pending Priorities (C List) (Issues can be viewed in full from the Area Board Section on the Wiltshire Council Website)			
c)	<p>Issue 4505 – ROYAL WOOTTON BASSETT</p> <p><i>Submitted 25/02/16</i></p> <p>Speeding Along Nore Marsh Road RWB</p>	<p>07.12.17 - Johnathan Bourne informed RWB TC had allocated a CATG budget and are keen to consider CATG issues holistically for the whole town.</p> <p>06.09.2017 – if the school put in a request, traffic calming lights at critical times can be supplied if the school has an appropriate travel plan in place.</p>	<p>JB –RWBTC has selected this as one of their 2 priority areas and have requested a metro count. Chris Hurst says there are people ready to do Speedwatch but await training. Alexa Davies to liaise with TC on location .</p>	AD to request Metrocount

COMMUNITY AREA TRANSPORT GROUP ACTION / NOTES LOG

		<p>High volume of traffic speeding vehicles especially trucks site traffic down Nore Marsh Road between Nore down Way and Washbourne Road Wootton Bassett. Refer to TC. Alexa to talk to RWB TC with a view to metrocount after Network Rail works finished.</p> <p>Chris Hurst is trying to get a speedwatch scheme arranged and needs metrocount to be requested by Town Council.</p> <p>Cllr Paul Heaphy to talk to school to see if they want a non-TRO flashing 20mph scheme out side the school – CH will take this as casework.</p>	<p>CH to check with Paul Heaphy if he has spoken with school with regard to the 20mph school signs.</p>	
i)	<p>Issue 5082 - PURTON</p> <p>Submitted 9/1/2017</p> <p>Safety concerns at Purton village centre.</p>	<p>06.12.17 - the Co-op have sent through some plans. The Co-op have informed SH they have no budget available. SH confirmed no S106 money was available. SH stated this issue is not a safety risk at present.</p>	<p><i>No action can be taken as will be looked at as part of planning application.</i></p> <p>RT and SH met. The Co-op scheme is purely lineage scheme. SH to write to the agent to find out frequency of deliveries etc. Still ongoing until we know what the Co-op is planning to whether they come to the village or not.</p>	
l)	<p>Issues from previous CATG meeting</p>	<p>06.09.2017 – 5 metro counts – not clear what the current status is of these – AD to chase</p>	<p>Chase up metrocounts</p>	<p>AD</p>
6.	Outstanding Issues by Division			
		<p>Please see Appendix A – new issues March 2018.</p>		
7.	Substantive Highways Scheme			

COMMUNITY AREA TRANSPORT GROUP ACTION / NOTES LOG

		Two possible schemes in the offing – Tockenham (5892) and Purton (4458)		
8.	Finance – CATG Budget and Pavement and Footway Improvement Scheme			
		<p>BUDGET £13,273 remaining with £14,205 to come in from April.</p> <p>Purton Manor Hill came in a lot cheaper – half the cost.</p> <p>Around £50k available for 2017/18</p> <p>FOOTWAY Improvements In December 2017, The CATG group agreed to put forwards the larger projects as substantive schemes (Bath Rd, Brynards Hill, Lyneham, Purton) . Details of 2018-19 footpath funding not yet available.</p>	SH to send electronic version of budget to go with notes.	SH
9.	Freight Route Reviews			
		Decision regarding Freight Route Reviews: http://cms.wiltshire.gov.uk/documents/s141207/Appendix.pdf	Nothing for our area	
10.	Other items			
11.	Date of Next Meeting: Wednesday 6th June 2018			

COMMUNITY AREA TRANSPORT GROUP ACTION / NOTES LOG

Highways Officer – Steve Hind

1. Environmental & Community Implications

1.1. Environmental and community implications were considered by the CATG during their deliberations. The funding of projects will contribute to the continuance and/or improvement of environmental, social and community wellbeing in the community area, the extent and specifics of which will be dependent upon the individual project.

2. Financial Implications

2.1. All decisions must fall within the Highways funding allocated to Royal Wootton Bassett and Cricklade Area Board.

2.2. If funding is allocated in line with CATG recommendations outlined in this report, and all relevant 3rd party contributions are confirmed, Wootton Bassett and Cricklade Area Board will have a remaining Highways funding balance of **£Tbc.**

3. Legal Implications

3.1. There are no specific legal implications related to this report.

4. HR Implications

4.1. There are no specific HR implications related to this report.

5. Equality and Inclusion Implications

5.1 The schemes recommended to the Area Board will improve road safety for all users of the highway.

6. Safeguarding implications

Non prioritised CATG issues 28th Feb 2018						
Issue	Description	Date received	status	Division	Notes	
6150	Conditionuse of bridle path Cricklade	22/02/2018	in progress	CRICKLADE	Not a CATG issue	close
4761	CATG Speeding request for metrocount.	13/07/2016	in progress	CRICKLADE	superceded - CLOSE	close
4623	CATG- Request for Traffic Survey High St Town Hall and High Street North	06/05/2016	in progress	CRICKLADE	superceded - CLOSE	close
4604	CATG -Request for 20MPH Limit -Culverhay St Sampsons School	20/04/2016	in progress	CRICKLADE	superceded - CLOSE	close
4424	CATG - metro count along Chelworth Road Cricklade SN6 6HL	15/01/2016	in progress	CRICKLADE	superceded - CLOSE	close
3514	CATG Speeding at Latton Wharf	01/08/2014	in progress	CRICKLADE	superceded - CLOSE	close
3336	CATG Request for bollards	09/04/2014	in progress	CRICKLADE	superceded - CLOSE	close
3329	Coninually cracking pavements not responding to maintenance	04/04/2014	in progress	CRICKLADE	Not a CATG issue	close
3328	Damage to road and pavement	04/04/2014	in progress	CRICKLADE	old issue	close
6046	Speeding around Mustang Way	26/01/2018	received	PURTON	JL has taken this as case work	Close - nothing to be done until developer has put in puffin crossing
6019	traffic concerns in The PeakReids Piece	16/01/2018	received	PURTON	this was submitted by Cllr JL	close -double yellow lines due to be done - cannot do anything further
4019	CATG traffic speed C414 Widham Purton	12/05/2015	in progress	PURTON	this is part of the issue being looked at by 4458	merge with 4458
6075	Missing road sign B4553	05/02/2018	received	PURTON		
6149	Signage at Lydiard Millicent	21/02/2018	in progress	RWB EAST	pc discuss	
6077	Common Platt	05/02/2018	received	RWB EAST	road junction	
6076	Highway Verge erosion Common Platt	05/02/2018	received	RWB EAST	road junction	
6073	Common Platt Speeding	05/02/2018	received	RWB EAST	road junction	
6062	Issues at Sally Pussey	01/02/2018	received	RWB EAST	signing work was done last year -	needs to go to LTPC
5968	Common Platt issues	21/12/2017	received	RWB EAST	road junction	
5916	Pedestrian safety on Church chicane footpath LM	05/12/2017	in progress	RWB EAST	work was done - redesigned to stop traffic from build out - people been brushed by wing mirrors. Colin Reeves looked it. Move back the give way by 3m.	SH has an action to do the give way as part of road safety
5915	Road layout and verge errosion at the junction bot	05/12/2017	in progress	RWB EAST	RWBTC PC agrees and will put £2.5k	onto C list
5634	CATG - metrocount request at Stone Lane Washpool	24/08/2017	in progress	RWB EAST	check with Alexa	AD to request metrocount
5511	CATG - speeding traffic on Greatfield	10/07/2017	in progress	RWB EAST	Close - nothing we can do unless CSW	close

4367	CATG - Parishioners to the Lydiard Millicent Parish Council that there are major traffic issues	02/12/2015	in progress	RWB EAST	superceded - CLOSE	close
4313	CATG-Traffic calming on bend Lydiard Millicent nr Old Chapel	30/10/2015	in progress	RWB EAST	LMPC agrees it is an issue	onto C list
4076	CATG TRO requested The Butts bus stop	22/06/2015	in progress	RWB EAST	done - closed	close
5565	CATG - parking issue along Rylands Way	31/07/2017	in progress	RWB NORTH	Remove - TC not priority	close
4578	Parking Problem with School traffic Byron Ave RWB	07/04/2016	in progress	RWB NORTH	Remove - TC not priority	close
4101	Business request to put up signage	08/07/2015	in progress	RWB NORTH	This should have been closed - not CATG	close
6015	Blind Sport Barton Church Street RWB	15/01/2018	in progress	RWB SOUTH	This only affects one property so is unlikely to get any CATG priority.	Close
5269	CATG - dangerous crossing at the New RoadStation Road junction	02/04/2017	in progress	RWB SOUTH	Letter from RWB TC Feb 2018 to say that they would support this.	onto C list

Wootton Bassett & Cricklade CATG

FINANCIAL SUMMARY MARCH 2018

BUDGET 2017-18

£14,205.00 CATG ALLOCATION 2017-18

£23,930.00 2016-17 underspend

Contributions

£1,404.00 Purton PC for Manor Hill footway

£2,500.00 Cricklade TC for Chelworth Road hgv signing

£7,000.00 Purton PC for Widham Bridge

£500.00 Purton PC for Station Road

£1,250.00 Cricklade TC for Chelworth Road speed limit

Total Budget 2017-18

£50,789.00

Commitments from previous years

Purton Manor Hill footway

£5,616.00 PC contribution 25% £1404

Cricklade chelworth road speed limit ammendment

2500 Estimate. PC contribution 50% £1250

Cricklade chelworth road HGV signing

5000 PC contribution 50% £2500

Purton Widham bridge traffic calming

14000 Estimate. PC contribution £7000

Purton Station Road parking bays

2000 Estimate. PC contribution 25% £500

New Schemes

Cricklade North Wall Waiting restrictions

0

Broad Town traffic calming

0

Bradenstoke junction with B4069 resigning and roundels

8400 estimate

A3102 Tockenham proposals

Purton, Crosslanes Junction

Total 2017-18 **£37,516.00**

Remaining Budget 2017-18 **£13,273.00**

Update for Royal Wootton Bassett & Cricklade Area Board

Update from	Recycle for Wiltshire Joint Venture
Date of Area Board Meeting	21 March 2018

Headlines

Wiltshire Council funds Wiltshire Wildlife Trust's Waste Education Team to educate and encourage school children and communities throughout Wiltshire to reduce, reuse and recycle more of their household rubbish. Currently the project is working in Royal Wootton Bassett & Cricklade and Westbury.

- We recently gave an assembly to 360 pupils at Royal Wootton Bassett Academy, to raise awareness about the impact of our rubbish and ways to reduce it and recycle more.
- We've visited primary schools in Royal Wootton Bassett where we've not yet worked to encourage them to book us to come in and run our free workshops and assemblies on reducing and reusing waste and recycling more – they can contact us on rethinkrubbish@wiltshirewildlife.org
- The final designs from our 'Drop the Rubbish Attitude' litter and recycling campaign, run with students from Royal Wootton Bassett Academy and Town Cllr Sue Hughes are printed and ready to be put up around town. We are talking to the school to get pupils involved in putting the stickers/posters up.
- Thames Pre-School in Cricklade have really taken on board the waste-free activities the team have been running with them and are going for our Wiltshire Waste Watchers Setting Award.
- We ran a waste-free workshop with Cricklade Beavers and Cubs to encourage them to reduce, reuse and recycle more of their rubbish.

-
- During February we ran the #Waste Free Feb campaign - over one hundred people signed up to the challenge of producing only a jam jar or small tub's worth of rubbish during the month or to be more aware of how much they were throwing away. Those taking part saved two tonnes of rubbish from going in the bin during the month! Gemma, who ran the campaign, got lots of local publicity appearing several times on BBC Wiltshire where one of their presenters took part in the challenge and in local papers.
 - The Team took residents from the area on a tour of Wiltshire's Landfill site and Recycling Facility on 8 February – the group had an interesting and informative visit which was so popular that we're planning to run another tour in April.
 - With Lyneham Community Centre we organised a 'Waste Free Lunch', cooking up a lovely veg stew, tasty soup and delicious banana pancakes with ingredients given to us by the local Co-op store who would have been throwing them away. Lots of local families came and we talked to them about ways to use up left-over food, buying food with less packaging along with other fun activities.
 - We have some posters to encourage recycling, please ask us for one if you know somewhere you could display one.
 - We're planning some Easter upcycled gardening fun in Royal Wootton Bassett library – come along to this free session on Wednesday 4 April from 10am to 12pm.

